



CONGRATULATIONS



Congratulations to the Year 9 Scholarship Recipients

It was our great pleasure to announce the recipients of the 2026 Year 9 scholarships in week 1 of this term. We were delighted to receive a large number of outstanding applications at the end of Term 1, making the selection process especially difficult. Congratulations to the following exceptional students:

Academic

Ben Parkins, Emma Abel

Cultural and Performing Arts

Quinn Povey, Kate Dumlao, Wilbur Hintz, Jack Paterson

Sports

Malia Hanaray, Ollie Apatu

Principals

Rihana Eagle

Uniform Shop Hours

Wednesdays 10:55am - 11:30am
3:00pm - 4:00pm

Upcoming Events:

Saturday 30 May - Monday 1 June
Choir workshop weekend

Monday 1 June
King's Birthday - School closed

Tuesday 2 June
Teacher Only Day
School closed for instruction

Wednesday 3 June, 12:30pm
Dance-Footnote Company Workshop

Thursday 4 June
Senior Parent Teacher Interviews
School finishes at 2:00pm

Friday 5 June
Chamber Music Contest

Tuesday 9 June
Academic Institute Event
EL Year 10 Whānau Hui
Dance Performance at Daycare

Wednesday 10 June
Lytton Exchange, Gisborne

Thursday 11 June
Young Viticulturist of the Year HB
Regionals
Level 3 Drama Wheeler's Luck

Saturday 13 June
Rockquest Regional Finals

Monday 15 June
Scripted Production the Crucible
(abridged)

Wednesday 17 June
The Big Sing

Thursday 18 June
Winter Interhouse Sports

Friday 19 June
Level2/3 Market Day
Ngā Manu Kōrero
Junior Japan Trivia Night, 5:30pm

ACTING TUMUAKI / PRINCIPAL

Tēnā koutou e te whānau mō te kura tuarua o Karamū

My key message to the student body at the start of this term has been a clear focus on **wellbeing**, because I believe it sits at the foundation of both learning and personal growth.

I know that wellbeing has a direct impact on how students think, feel, and learn each day. When our rangatahi feel positive, supported, and connected, they are more engaged in the classroom, build stronger relationships with others, and are better equipped to manage the challenges that come their way. Quite simply, when students feel well, they are in a much stronger position to achieve success and to be their best selves in all aspects of school life.

I also recognise that a strong sense of wellbeing plays a vital role in supporting young people's mental and emotional health. It helps students to understand and manage their feelings, develop resilience when things are difficult, and feel confident asking for help when they need it. These are not just skills for school, they are lifelong capabilities that will support our students well beyond their time at Karamū High School.

To support this focus, we are continuing to use **Linewize Pulse** as an important tool for student voice and wellbeing. Pulse provides students with a safe and simple way to check in each week and reflect on how they are feeling. These regular check-ins help build self-awareness and give students the opportunity to flag concerns early if something isn't quite right. This allows us to respond with care, ensuring the right support is in place before challenges become overwhelming.

Student voice through Pulse is a vital part of this process. Honest and regular feedback helps me, and the wider school, better understand what our students are experiencing, what is going well and where additional support may be needed. This insight allows us to respond in ways that are meaningful, timely, and targeted, ensuring that our actions reflect the real needs of our learners.

By prioritising student wellbeing, we are committed to continuing to strengthen a school culture grounded in **manaakitanga**, where every student feels cared for, respected, and supported to thrive both in and beyond the classroom.

Ngā mihi

Mr Troy England
Acting Tumuaki/Principal



DEPUTY PRINCIPAL - CURRICULUM



Kia ora e te whānau,

Today marks the completion of the May round of literacy and numeracy assessments, with approximately 300 of our students taking part in these important exams. These assessments are a key step in supporting students to achieve their NCEA co-requisite and build essential skills for future learning. Results are expected to be released between mid-June and late July. For students who need another opportunity, a further assessment round will take place in September. Students can also continue to work towards achieving the literacy and numeracy requirements through internal assessments in their English and mathematics classes.

We encourage whānau to attend the upcoming whānau–teacher interviews next week, as these meetings provide valuable feedback and, importantly, feedforward - clear next steps for students to continue progressing. It is not too late to make an appointment, which can be arranged through the school office. We strongly encourage students to reflect on this guidance and make any necessary adjustments to their learning habits and approach, as small, consistent changes can make a significant difference over time.

At Karamū, one of the key ways we support students to meet assessment deadlines is through the use of milestones. All NCEA internal assessments include at least one milestone checkpoint designed to check that students are on the right track, provide timely feedback and guidance, and ensure work meets the requirements of the assessment standard. If your child misses a milestone, you will receive communication from the classroom teacher outlining what has occurred, the next steps for your child, and how whānau can support at home. We know that whānau play a vital role in helping students stay organised, motivated, and engaged with their learning, and your support makes a real difference.

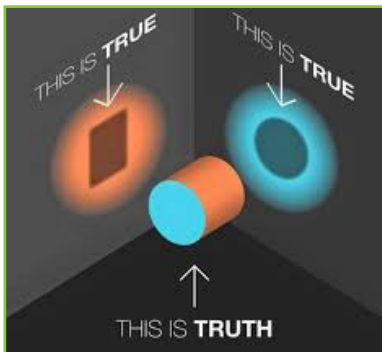
As we move through Term 2, we encourage students to remain focused and take full advantage of the opportunities ahead. By working together, we can support every student to succeed and make the most of their learning journey.

Ngā mihi

Ms Sarah Gunn
Deputy Principal - Curriculum

ACTING DEPUTY PRINCIPALS - PASTORAL

Kia ora e te whānau,



We want to acknowledge and celebrate the incredible level of student involvement in extra-curricular activities this term. Whether in sports teams, cultural groups, performing arts or other opportunities. It has been fantastic to see so many students representing Karamū with enthusiasm and commitment.

A special thank you goes to all our whānau who show up on the sidelines, in the audience and behind the scenes. Your encouragement and support play a vital role in our student success and sense of belonging.

Belonging to a team or group has many benefits for the development of our akongā. It helps them develop their social skills and make new friends, it keeps them learning new skills in teamwork, leadership, physical and mental, not to mention resilience and commitment. The benefits are huge.

In the current climate with cost of living, high fuel prices, and the general pressures of life, it can sometimes have us on edge and less tolerant of the behaviours or attitudes of others, and this can lead to friction. A message we send our students when in these situations is to pause before you engage. Think about what you are saying or doing, or about to say or do, and imagine how you would feel if someone did that to you or a member of your whānau. If you wouldn't like it then it is a pretty good sign that maybe you should rethink what you are doing and why you are doing it.

If on the receiving end of such behaviours, often the best approach is to not respond and consider what's happening for that person that is making them behave that way. Then let someone know so that they get the appropriate support for the behaviours they are showing. Certainly, the de-escalation of such situations means appropriate supports and consequences can be applied without more harm being done. There are always multiple perspectives to a situation and the intent, and here at Karamū, when we follow up on such events, we follow a strict policy and process to make sure natural justice is served and the harm repaired.

Ngā mihi
Mr Micheal Fleming
Acting Deputy Principal - Pastoral Senior

Mrs Tash Crawford
Acting Deputy Principal - Pastoral Junior



STEPPED ATTENDANCE RESPONSE

The Government's target is for **80% of students to attend regularly**, that is to attend school more than 90% of the time



From 2026, all schools must follow the Ministry's **Stepped Attendance Response (STAR) Framework**, which aims for at least 80% of students to attend school more than 90% of the term. The framework groups attendance into four stages:

Good Attendance (Fewer than 5 days absent)

Students are well placed for learning. Families should continue supporting consistent attendance.

Worrying Attendance (Up to 10 days absent)

Absences may begin to affect progress. The school will contact whānau to discuss reasons and provide support.

Concerning Attendance (Up to 15 days absent)

Regular progress is harder to maintain. A formal meeting may be arranged to develop a personalised support plan.

Very Concerning Attendance (15+ days absent)

Learning is significantly impacted. An escalated response will be initiated, which may include external agencies.

NB: The Ministry of Education define both justified (i.e. medical, bereavement) and unjustified (i.e. truant, holidays) as absence.

ACTING DEPUTY PRINCIPAL - STAFF

Kia ora whānau,



Term 2 has gotten off to a blazing start, and we are looking forward to a term that includes several important events for our school community.

A key focus this term is our Parent-Teacher-Student Interviews, which will be held for both senior and junior students.

- Senior interviews: Thursday 4 June
- Junior interviews: Thursday 25 June

In the weeks leading up to these interviews, you will receive an email from the school with instructions on how to book a time to meet with your child's kaiako. The senior booking email will be sent toward the end of Week 4, and the junior booking email will be sent at the end of Week 7.

Prior to both interview evenings, reports will be sent home. These reports include five sections that align with our school values. As part of recent curriculum changes, you will notice some updates to the report format. In place of Academic Progress, reports now include Curricular Progress. The progress descriptors for this section have also changed.

Please refer to the graphic below for more information about the new progress descriptors.

A reminder that:

- 1 = Exceeding
- 2 = Proficient
- 3 = Consolidating
- 4 = Developing
- 5 = Emerging

By the end of the year, our goal is for ākonga to be working at Proficient (2) or above, demonstrating readiness to move on to the next curriculum level.

If you have any questions about interview bookings, please contact the school office. We look forward to welcoming you to our Parent-Teacher-Student Interviews and continuing to work in partnership to support your child's learning.

Ngā mihi nui

Ms Amber Walter
Acting Deputy Principal

PROGRESS DESCRIPTORS

The Progress Descriptors

<p>Emerging Students require support to meet curriculum expectations for their year level and/or goals as described in their personalised learning plan.</p>	<p>Your child:</p> <ul style="list-style-type: none"> • Is beginning to understand some learning ideas for their year level with a lot of support. • Can sometimes use knowledge they've learned, but usually needs help to do so. • Is making some progress in ways that are meaningful and aligned to their strengths and needs, with significant support.
<p>Developing Students are making some progress towards curriculum expectations for their year level.</p>	<p>Your child:</p> <ul style="list-style-type: none"> • Is starting to understand key ideas, often with some support. • Can remember facts and use what they've learned in familiar situations, with a bit of help. • With the right support, your child is making progress towards the expectation for their year level.
<p>Consolidating Students are meeting many curriculum expectations for their year level and are steadily strengthening their understanding across learning areas.</p>	<p>Your child:</p> <ul style="list-style-type: none"> • Is learning to use helpful techniques on their own to support their learning. • Is getting better at remembering and using what they have learned. • Is starting to use what they know in new and different situations. • Can share their ideas and is beginning to talk about what they would do better.
<p>Proficient Students are meeting curriculum expectations for their year level.</p>	<p>Your child:</p> <ul style="list-style-type: none"> • Can use helpful learning techniques on their own and knows how to use them well. • Can use what they've learned in different situations without help. • Can often use what they know in new situations. • Can share their thoughts clearly and explain their reasoning. • Often shares their ideas to build knowledge.
<p>Exceeding Students are exceeding curriculum expectations for their year level.</p>	<p>Your child:</p> <ul style="list-style-type: none"> • Shows advanced thinking by understanding tricky ideas, solving problems, making connections, and explaining their thinking clearly. • Can link what they've learned in one area or situation to another. • Can build on their ideas and show deeper understanding. • Can use what they've learned in thoughtful and creative ways to understand more challenging ideas. • Tests and challenges ideas to create deeper knowledge.



KARAMŪ HIGH SCHOOL

The
1980's

register your interest at
tiraora@karamu.school.nz

Reunion

18-19 Sept.



CABARET

The Year 13 Cabaret is a highlight of the school calendar, providing senior students with the opportunity to lead the planning and enjoy a memorable formal occasion with their peers. Held on Thursday, 7 May at the prestigious Cheval Rooms at Hastings Racecourse, this year's event was a resounding success.

Inspired by the theme "**A Night at the Oscars**," students and their guests were treated to a delightful three-course meal, followed by an evening of dancing, photography, and shared celebration.

The atmosphere was filled with joy and camaraderie, creating lasting memories for all in attendance. As the evening concluded at midnight, buses transported students home, marking the end of a truly special occasion.

We extend our sincere thanks to Mr England for his exceptional leadership of the head student team and his commitment to organising such a successful event.

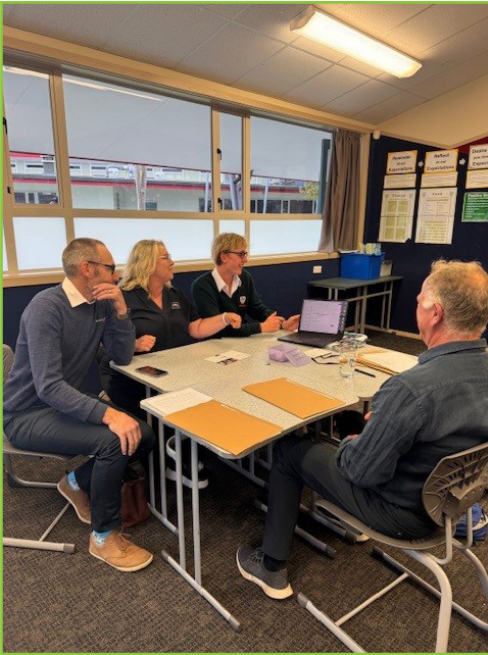
We hope you enjoy this collection of photographs, which capture the spirit and highlights of the evening.



CABARET



LEARNING CONVERSATIONS



Karamū High School proudly hosted its inaugural Learning Conversations Evening for Year 11 and Year 12 students last term, marking an exciting new initiative aimed at strengthening partnerships between students, whānau, and teachers.

Learning Conversations - often referred to as 3-way conferences are a fresh approach introduced in 2026 to empower students as active participants in their own education. Each 15-minute session brought together the student, their learning coach (teacher), and whānau to engage in meaningful discussions centred on progress, goals, and future aspirations.

The evening was characterised by purposeful and focused discussions, with students taking the lead in sharing their achievements and identifying areas for growth. By using real data including attendance records, academic reports, and achievement results - each conversation provided a clear and informed foundation for planning the year ahead.

The success of the inaugural Learning Conversations Evening has set a strong foundation for this initiative moving forward. Karamū High School looks forward to continuing these meaningful connections and further strengthening the partnership between school, students, and whānau.

This innovative approach reflects the school's commitment to empowering learners, supporting families, and ensuring every student is equipped to succeed - both in school and beyond.



BRONZE DUKE OF EDINBURGH

Our 2026 Duke of Edinburgh Hillary Award Bronze students took on their first overnight tramp with energy and enthusiasm, and for some, it was their very first camping experience!

Carrying heavy packs up to Sunrise Hut and cooking their own meals on gas cookers, the girls rose to every challenge with determination and resilience.

They proudly represented Karamū while developing a wide range of new outdoor skills, and their perseverance, although challenged, shone through every step of the journey. An incredible effort all round!



Mrs Callow and Mrs Moran

ROCKQUEST

Smokefree Rockquest 2026 Hawke's Bay Regional Heats

4 Twelve 2 band members Maaki Wairau (lead vocals), Toby Danes (lead guitar), Brodie Russell (rhythm guitar), Rohan Polon (drums) and Denzel Douglas-Puna (bass guitar) recently entered the Smokefree Rockquest regional heats and 12 bands got through to the Hawke's Bay regional finals at Toitoti.

Congratulations on making it to the finals on Saturday 13 June 2026.

Tickets available soon via the [Smokefree Rockquest website](#).



GEOGRAPHY



Earlier in May our Level 2 and 3 geography students headed off to Tukituki River to do their river research.

Thank you very much to Mrs Starck, Mr Jaspaert, Dana and Nina for their part in making this trip happen.

YEAR 13 PARENT MEETING

 Tuesday 23 June

 6:30PM - 8:00PM

 School Library

We invite whānau of Year 13 students intending to study at a tertiary institution in 2027 to attend our Tertiary Information Evening.

This will be an opportunity to learn more about pathways, planning, and next steps after school.

Further information will be shared closer to the date.



SICK BAY

To help ensure students receive appropriate care and support during the school day, we would like to remind parents and caregivers that ***students should not contact families directly from their personal phones*** while at school, including when they are in the sick bay.

If a student is unwell or needs to go home, our office staff will contact parents or caregivers directly after assessing the situation. This helps us make sure correct information is shared, students are properly supervised and cared for, and communication is consistent and timely.

We also ask parents to please avoid arranging pick-ups or giving instructions based on messages sent directly from students during school hours.

If you need to contact your child urgently during the day, please do so via the school office, who can support as needed.

Thank you for your support in this.



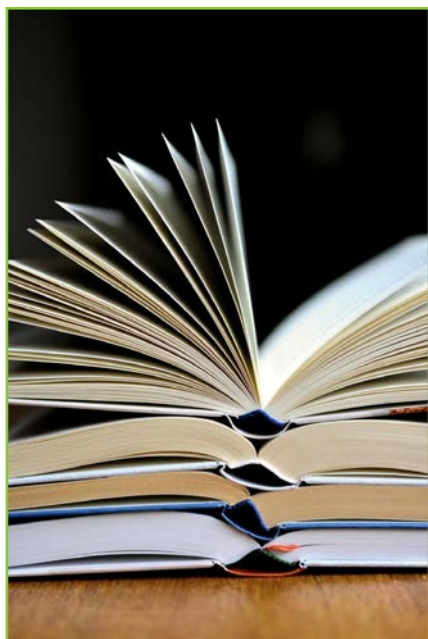
SUPPORT STAFF DAY



On Friday 15 May 2026 we warmly acknowledged and thanked our dedicated support staff for the vital role they play in our school community.

Their care, professionalism, and behind-the-scenes efforts help create a positive, inclusive environment where our learners can thrive. We truly appreciate all that they do thank you.

LIBRARY



School Librarians

We have a large and enthusiastic group of school librarians this year supporting Mrs Bawden, our new librarian, with the day to day running of the library and assisting students during break times.

In 2026, we have 17 returning librarians from 2025, 12 new librarians who began training in Term 1, and another six students who have moved from the waitlist into training for Term 2. We still have three names on the waitlist, it's fantastic to see so many students eager to be part of the library team.

We also welcome our new head librarian, Ngaio van Hooijdonk (Year 12), who joins Nia Khumalo (Year 12) in a leadership role. Congratulations, Ngaio.

Book Club

Ngaio has launched a book club, meeting every four weeks during a break time in the library. Everyone is welcome, there is no set book or genre.

For the next meeting, Ngaio has challenged members to read one of the NEW books recently added to our library collection.

These can be found on the library website under Quick Lists → New Resources:

<https://nz.accessit.online/KRM00/#!/resources/searchresult>

Date for the next meeting is to be confirmed. If you'd like to join, please see Mrs Bawden or message Ngaio.

Device Free Friday in the Library

This term we are trialling "Device Free Fridays" during break times. Students are invited to come into the library to read, play card or board games, do puzzles, draw, colour, or get creative. Bring a friend and join the fun every Friday.

Year 9 Readers Cup Competition

Two teams of four Year 9 students are currently reading six set books in preparation for the upcoming Readers Cup Competition. They will compete against other Hawke's Bay high schools in a quiz based on the books. The event will be held on 24 June at Havelock North High School.

Good luck to both teams.

CHESS TOURNAMENT

The Karamū High School Chess Club went to compete in the Interschool Chess Teams Tournament at Hastings Sports Centre on 8 May.

Playing six rounds in a league with eleven schools, both our A and B teams were off to a rough start losing the first two rounds.

After a huge comeback winning all games in rounds three, four and five, we were playing for a top three spot in the final round. Unfortunately, we fell just short against the top players in the region, but we proudly came in fourth and felt we played some good chess out there.

We will take this result as a win and look forward to the next tournament.



DANCE PERFORMANCE

On Friday 15 May dance students from Karamū High School performed at the Hastings High School Old Girls Netball Club 100th anniversary netball game. During half time they performed a range of different styles which showcased their skills and talent. This was an incredible opportunity for students and demonstrated all of the hard work, dedication and energy they put into dance.



ANZAC DAY



On Thursday, 23 April, we held a special ANZAC Assembly to honour and remember those whose service and sacrifice have shaped the freedoms we enjoy today.

The ANZAC story began on 25 April 1915, when more than 20,000 soldiers from Australia and New Zealand, many only just older than our students, landed on the shores of Gallipoli in Turkey. The conditions they faced were chaotic, perilous, and deeply confronting. Despite this, they displayed extraordinary courage and resolve in the face of adversity.

The term ANZAC, which stands for Australian and New Zealand Army Corps, has since become a symbol of courage, sacrifice, and mateship, values that continue to resonate strongly today.

Since the first commemorative services were held in 1916, the tradition of ANZAC Day has been preserved and passed from generation to generation. While it is now recognised as a public holiday, it represents far more than a day of rest. It is an opportunity to reflect, to show gratitude, and to remember those who served.

It is a time to pause and consider the actions of those who stood up when it mattered most, and to reflect on the enduring qualities of bravery, resilience, and loyalty that continue to inspire us all.

At our school assembly, our Year 13 student leaders led a commemorative segment by reciting *In Flanders Fields* (read by Jesse), followed by the *Ode of Remembrance* (read by Tamblyn and Annabel).

ANZAC DAY

Joseph Bassett then introduced our guest speaker, Benjamin Spence, a former student and current member of the New Zealand Army. Benjamin enlisted in 2012, undertaking basic training before being posted to several units, including the 2nd Combat Service Support Battalion. He later served as an instructor at The Army Depot and went on to join the Queen Alexandra's Mounted Rifles. Throughout his military career, Benjamin has progressed through the ranks, most recently achieving the rank of sergeant.

During his address, Benjamin reflected on how the values instilled at Karamū High School have supported and guided him throughout his journey beyond school.

On ANZAC Day, members of the senior leadership team and Year 13 student leaders represented the school at the Hastings Dawn Service, where they laid a wreath in honour of those from our school and wider community who have served.

This was a meaningful opportunity to demonstrate what it means to be both Proudly Karamū and Proudly Hastings.



ORIENTEERING



Congratulations to Year 11 students Lottie Melser and Alethea Currie, who came third in the senior girls section of the Urban Rogaine Orienteering Interschool champs.

This was a three-hour team event where students had to sprint up and down all over Bluff Hill.

Congratulations, Lottie and Alethea!

BEAUTY AND THE BEAST

A Magical Season: Beauty and the Beast Delights Audiences



Our recent school production of Beauty and the Beast has been an outstanding success, bringing together a remarkable number of students from across all year levels in a true celebration of creativity and collaboration. This year's musical was a shining example of what can be achieved when students work together with enthusiasm and dedication toward a shared goal.

From the earliest rehearsals through to opening night, students demonstrated an incredible commitment to the production. Cast, crew and technical teams all played vital roles in bringing this beloved story to life. It was particularly special to see students of different ages collaborate so effectively, supporting and encouraging one another while building confidence and friendships along the way.

We were thrilled to present three wonderful performances, each one filled with energy and charm. The students truly outdid themselves, delivering captivating performances that transported audiences into the magical world of Belle, the Beast, and their enchanted castle. From the impressive musical numbers to the detailed costumes, makeup, and set design, every element reflected the hard work and passion behind the scenes.

The response from our audiences was overwhelmingly positive. We received amazing feedback from many who attended, with praise for the high standard of performance and the dedication shown by all involved. It was incredibly rewarding for students to see their efforts recognised and appreciated, and to perform in front of such supportive and enthusiastic audiences.

Productions like this would not be possible without the support of our wider school community. A heartfelt thank you goes to all the families, friends, and community members who came along to watch the show. Your encouragement and kind words helped make this experience even more memorable for our students.

We are immensely proud of everyone involved in Beauty and the Beast. This production has been a wonderful reminder of the creativity and talent within our school, and we look forward to many more successful performances in the future.



LAND BASED TRAINING SUPPORT GRANT



Land Based Training is a leading education provider for people with a passion for agriculture and working with the land. They specialise in developing the next generation of skilled farm workers, livestock specialists and rural professionals, equipping learners with practical, industry-ready skills for careers across New Zealand's primary sector.

Land Based Training has offered us a significant **Support Grant** for individuals to apply for that meet the following criteria:

- The funding goes to students who would otherwise miss out. There is a demonstrable need (e.g., disadvantaged circumstances) or financial barrier to participation in activities, meaning the student might not participate.
- The individual shows positive interest, ability, or potential.
- Funding would be expected to cover either direct payment of non-sporting co-curricular activity fees or course costs; travel; equipment; uniforms (NB: within school or representing only).

The process is:

- Students apply for a specific amount (to a maximum of \$500 per annum) to the **Land Based Training Support Grant** via an online form at advertised times.
- [Application for Land Based Training Support Grant – Fill out form](#)
- Twice a term the applications are reviewed and approved by the grant review team.
- The grants review team at Karamū High School will be made up of a minimum of three persons from the group of principal, arts co-ordinator, financial administrator and any member of the SLT.
- Students and whānau will be contacted of successful and unsuccessful applications via email. Return of agreements are required for grants to be given.
- Successful applicants will have the approved amount credited to their school account to cover the costs incurred at school.

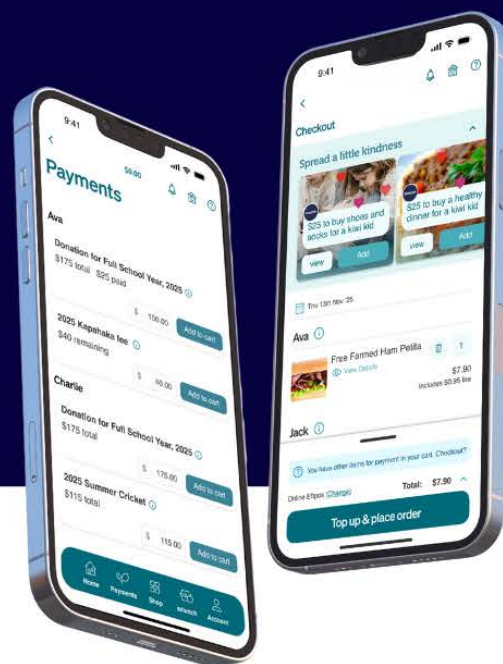
Application for Land Based
Training Support Grant



Making School Payments Simple

One Account. All Your Schools

Whether you're new to Kindo or already using it, managing school payments is easy.



New to Kindo?

- Scan the QR code to create your account
- Enter your details and add your student (s)
- Browse the school shop, purchase and check out.

Already have a Kindo account?

- Log in to your Kindo account
- Navigate to 'My Details'
- Select your student and add membership
- Select new organisation from the dropdown list
- Browse the school menu, add items to your cart, and check out.



Signing up:
Please ensure you sign up to Kindo with the email that Karamū holds on file for your child. Any queries, please call the office.



Have questions?

Our friendly team is here for you.

0508 4 KINDO (0508 454 636)

hello@mykindo.co.nz



New World Clubcard is changing to Club+

What this means for the Clubcard in Schools Programme

What is happening?

Club+ is replacing New World Clubcard from 15 June. You'll need to join Club+ to continue accessing the rewards and benefits you are used to with Clubcard as well as access online shopping. You can join Club+ from 18 May to get ready for launch.



What is Club?

Club+ is a new rewards and benefits programme across New World, PAK'nSAVE and Four Square. Club+ is replacing New World Clubcard and introducing rewards and benefits to PAK'nSAVE and Four Square. Club+ members will have a single sign on and card that can be used across all three brands to access rewards and benefits and online shopping.

Joining Club+

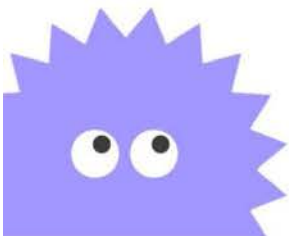
You can join Club+ via:

- New World, PAK'nSAVE or Club+ apps
- Club+ website: clubplus.co.nz
- By calling our Customer Service Team on 0800 80 70 70

How to stay involved in Club+ in Schools

You will need to join Club+ then re-register your Club+ card details with your school to stay involved with the Club+ in Schools programme. A permission form will need to be completed to confirm your Club+ card number, your child's graduating year and consent for your Club+ account details to be used for the programme.

If this step is not completed, your spending at your local New World will not be recognised as part of the programme and will not contribute towards the store's monthly contribution to your school.



TIRA ORA

In this issue of Karamū Kōrero we showcase Karamū's forty second year, the Year 2004

Principal: Mr M J Purcell

Deputy Principal: Mrs J B Clark

Head Boy: Marc Pau

Head Girl: Michelle Wilson

Dux: Hannah Braybrook

Te Taonga Trophy for Maoritanga: Crystal Edwards

Sportsman of the Year: Peter Wilson

Sporting Excellence: Michael Taylor

MacLeod Service Cup: Katie Francis

School Roll: 700

School:

- New Technology block nearing completion
- Karamu zoning scheme put in place, sees students turned away
- Students encouraged to stay at school sees largest Year 12 in a number of years
- Tony Kane leaves Karamu to become DP at Kapiti College (1986 - 2003), then goes on to be Principal
- Wiremu Whaitiri awarded NZ Order of Merit in New Year Honours (MNZM)

Students:

- Introduction of School Haka - "He Mana to te Matauranga"
- International students - 4 students from Brazil, China, France, Germany, Japan, Korea, Switzerland, & USA
- No longer mufti for Year 13, with a separate Year 13 Uniform introduced; Boys – Black trousers, white shirt, school tie; Girls – Black skirt, white shirt and a long green/black cardigan
- NCEA Assessment now at Level Two as well as Level One (Bursary still at Year 13)
- Computing compulsory for all Year 9 students

Sports:

- 5 teams at Canoe Polo Nationals all win medals - 3 students named in NZ Squad
- Tennis a popular sport with courts full at lunch
- Tramping Club established
- Girls' Rugby win the Hawke's Bay Secondary Schools competition
- Senior Girls' Basketball team win Hawke's Bay Interschool competition

Culture:

- Success at Hawke's Bay Secondary School Kapa Haka festival; Crystal Edwards first female leader; third in Waita-a ringa; second in Poi
- Alana Zivanovic is support soloist for Sir Cliff Richards at the Mission Concert
- Successes continue in Regional Dance
- Interschool Debating successes

HASTINGS:

Hawke's Bay Expressway to airport opened late in 2003, For 30 years the partially formed approaches for the Kennedy Rd overbridge had stood incomplete.

NEW ZEALAND:

NZ Population: 3,989,600, NZ Government: Labour, NZ Prime Minister: Helen Clark, Pollution of Rotorua lakes, Campbell Island rat free, Supreme Court established

Deputy Principal: Mr J M Lynex

Deputy Principal: Mr W Wooster

Deputy Head Boy: Arepa Paranihi

Deputy Head Girl: Hannah Braybrook

Proxime Accessit: Phillippa Bennett

General Excellence: Michelle Wilson

Sportswoman of the Year: Rachel Morley

Cultural Excellence: Alana Zivanovic



School Cab/Ball 2004

IF YOU HAVE CONCERNS

If you are a student and you have a concern

If your concern is about	You should first see	If not resolved, then	And is still not resolved
Your learning , eg. classwork and assessment	Your teacher	Your dean	Ms Gunn, Deputy Principal Curriculum
A discipline problem , eg. a detention	The teacher who gave you the detention	Your dean	Mr Fleming/Mrs Crawford Acting Deputy Principals Student Management
A pastoral issue , eg. bullying, attendance	Your mentor teacher	Your dean	Mr Fleming/Mrs Crawford or Mr Rolls/Ms Jensen the Guidance Counsellors

If you are a parent and you have a concern

If your concern is about	You should first see	If not resolved, then	And is still not resolved
A learning problem , eg. classwork and assessment	The dean	Ms Gunn Deputy Principal Curriculum & Assessment	Mr England Acting Principal
A discipline problem , eg. a detention	The dean	Mr Fleming/Mrs Crawford Acting Deputy Principals Student Management	
A pastoral issue , eg. bullying, attendance	The dean	Mr Fleming/Mrs Crawford or Mr Rolls/Ms Jensen the Guidance Counsellors	
A financial issue relating to any account or charge	Either Mrs Gray or Ms Brown in the office	Mrs Meiring Principal's EA	

YEAR LEVEL DEANS 2026

At Karamū High School, our year level deans play an important role in the pastoral care of your child. Our year level deans for 2025 are listed below for your information. Please email your child's dean or phone 878 7139 and leave a message, if you wish to contact them.

Year 9 Deans



Tash Crawford
tcrawford@karamu.school.nz

Year 10 Deans



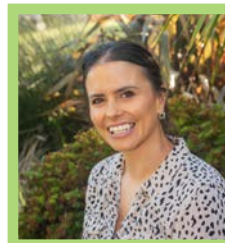
Jade Starck
jstarck@karamu.school.nz

Year 11 Deans



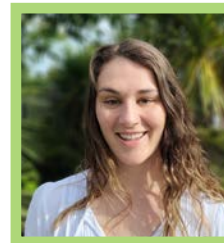
Julie Burn
jburn@karamu.school.nz

Year 12 Deans



Jasmine Black
jblack@karamu.school.nz

Year 13 Deans



Jess Callow
jcallow@karamu.school.nz



Mike Fleming
mfleming@karamu.school.nz



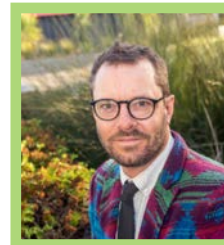
Byron Crawford
bcrawford@karamu.school.nz



Dave Murdoch
dmurdoch@karamu.school.nz



Paul Mills
pmills@karamu.school.nz



Tom Willis
twillis@karamu.school.nz

NGĀ POU KAIĀRAHI

Year 9



Holly Bruce
hbruce@karamu.school.nz

Year 10



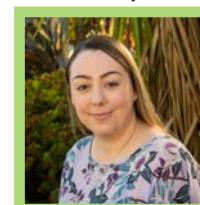
Ashley Blake
ablake@karamu.school.nz

Year 11



Tom Blake
tblake@karamu.school.nz

Year 12/13



Rebecca Love
rlove@karamu.school.nz