



**Uniform Shop Hours**  
Wednesdays 10:55am - 11:30am  
3:00pm - 4:00pm

**Upcoming Events:**

**Monday 30 March**  
Shakespeare Festival

**Tuesday 31 March**  
Puhoro STEMW Wananga

**Term One finishes**  
Thursday 2 April

**Monday 20 April**  
Term two commences

**Wednesday 22 April**  
Year 13 Hastings Art Gallery visit

**Monday 27 April**  
ANZAC day observed

**Sunday 3 May**  
Orienteering ROGAINE Champs

**Thursday 7 May**  
Year 13 Cabaret

**Thursday 14 May - Saturday 16 May**  
Beauty and the Beast Production

**Sunday 17 May**  
Rockquest regional heats

**Sunday 24 May**  
HB Orienteering Middle Champs

**Wednesday 27 May**  
Year 12 Careers Expo

**Monday 1 June**  
Kings Birthday

**Tuesday 2 June**  
Teacher Only Day

**Thursday 4 June**  
Senior Parent Teacher Interviews

Windsor Avenue  
Hastings 4122  
New Zealand  
Postal address  
PO Box 346, Hastings 4156  
Phone +64 6 878 7139  
[admin@karamu.school.nz](mailto:admin@karamu.school.nz)  
[www.karamu.school.nz](http://www.karamu.school.nz)

## 2026 YEAR 13 STUDENT LEADERS



L-R: Joseph Bassett (Deputy Head Student), Jesse du Preez (Head Student), Mrs Dionne Thomas (Tumuaki/Principal), Tambllyn Hutchings (Head Student), Annabel Allan (Deputy Head Student)

Leadership is one of our school values and while all students have the ability to display this value by showing initiative, self-management, honesty, integrity and reliability; leading others, however, can also mean motivating a group of people to act towards achieving a common goal, supporting others, being helpful and showing the way. This group was voted on by their peers and the staff for repeatedly demonstrating these attributes.

This group will represent the school on many occasions, taking an obligation to champion our Proudly Karamū, Proudly Hastings, Proudly Learning vision and our WELCOME values established by the school and our community. Like previous years this group has chosen a whakatauki in which they want to aspire to and champion for the year. This year it is:

***Ko ngā pae tawhiti whaia kia tata, ko ngā pae tata, whakamaua kia tina.***

This can translate to 'the potential of tomorrow depends on what we do today'. It emphasises balancing future aspirations by acting on current opportunities, encouraging pursuing long-term goals and dreams (the distant horizons) while acknowledging and securing present achievements (the near horizons). We can use it to inspire students in education, personal development, and/or community improvement, promoting a "work to be done" mindset. Our community will see that whakatauki every day at the front of school, taking an opportunity to embrace that challenge and know that alongside of whānau, staff and these student leaders, we believe everyone can be the best version of themselves now and in the future.

# TUMUAKI / PRINCIPAL

Tēnā koutou tēnā koutou tēnā koutou katoa,

It has been a busy, yet short, quick term - full of learning, events and action! In this Kōrero, we are thrilled to introduce our 2026 Year 13 Student Leaders. This outstanding group of young people has already begun to bring energy, unity, and inspiration to our school, and we know they will continue to uplift our entire kura throughout the year. A huge and heartfelt congratulations to our student leaders (featured later in the Karamū Kōrero). They embody the belief that “leadership is not about a title or a designation, it’s about impact, influence, and inspiration.” We cannot wait to celebrate the contributions they will make in 2026 and the positive legacy they’ll leave behind.

This term in each assembly I have been giving the student body a ‘*Thomas’s Top Tip*’ to be smarter and better. I thought I would share them with you to support your child’s journey this year and into the future...

**Tip # 1:** In 2024 and 2025 I held a concept called ‘Popcorn with the Principal’ where I met a small group of Year 10 from each mentor class to hear about what they liked at Karamū or would like to see improved or added. One conversation was around why the water out of the fountains was warm. The reason is the pipes going to them are close to the surface and out in the open. I therefore arranged to have a bottle filling station installed in a shaded spot where the pipes are in the wall and therefore cooler.

My top tip therefore is ... bring a bottle to school, fill it up and **drink water** in this warm weather. We are a water and milk only school. No fizzy drinks or energy drinks. As a teenager they should also be aiming to drink on average 1.5L water a day.

**Top Tip #2:** Read and listen to the daily notices to keep up to date. **The notices** are the way teachers, coaches, teachers in charge, managers, student leaders, SLT, external providers, prospective employees, careers, a whole raft of people all communicate. We make sure everyday there are **4** ways in which they can get these:

1. In hard copy on the two notice boards - outside VA 1 and the gym.
2. In digital form on the School App (check it on phones before or after school).
3. On the KAMAR portal login page.
4. In verbal or viewing on PDF form in mentor time.

**As students are now at high school we want to build more independence, so THEY need to make sure to check out one of these places everyday to get up to speed with how to join that team, that group, apply for that grant or job.**

**Top Tip #3:** A hauora initiative that started in 2021 across all schools in the country was **free period** products. That means every girl in NZ is entitled to free period products. That is great money saving for families to spend on food, clothing or whatever is needed every month.

The products are available at the library, the nurse and the sick bay for girls to get. So get along at break, lunchtime or before or after school and get supplies. Don't be shy, periods are natural. Period.

**Top Tip # 4:** Is around another way we support hauora. We have available for those that need it - **loan uniform**. It may be your jacket is at dad's and you suddenly end up at mums, you split your shorts playing volleyball, your shoes get forgotten at ki o rahi or you out-grow your shirt and are waiting until mum's pay day next week to get a new one...whatever the reason we are happy to loan uniform instead of students being in the wrong uniform. This is because our uniform is part of our Proudly Karamū vision and it is also about whanaungataunga, having school pride. So, if students are in the wrong uniform do not be surprised when they are supported to come over and be loaned a piece of uniform until they get their own. Or they could show initiative and come to the office themselves!

**Top Tip # 5:** Another way to be smarter and organised at school. Knowing where to get notices, permission slips and forms. While many may be available on groups or course Teams pages, or via the website, most are available at what we call the 'Notices Carousel'. It has forms for laptop loan, sports registration, trips, driving cars to school and other events that need caregiver signature. Students are encouraged to check it out first before asking the teacher in charge, to show initiative!

As communicated last year I will be leaving school at the end of the April holidays for a one-year secondment to the Ministry of Education as a regional leadership advisor. I will be based in the Napier office but covering all of Hawke's Bay/Tairāwhiti. This is an exciting leadership opportunity for me to mentor, coach and support principals and school leaders across the region, but also an opportunity here at Karamū as it allows several staff to step up into acting leadership positions during this time. I confirm the following:

- Principal Term 2 and 3 2026: Troy England
- Principal Term 4 2026 and Term 1 2027: Damien Hollands
- Deputy Principal Staff Administration Term 1 2026 - Term 1 2027: Amber Walters
- Deputy Principal Pastoral (Senior Students) Term 2 and 3: Micheal Fleming
- Deputy Principal Pastoral (Junior Students) Term 2 and 3: Tash Crawford

Please keep communicating positively in my absence, through the channels as outlined at the back of this Kōrero. I look forward to hearing about and following all the amazing mahi Karamū continues to do.

**Mā mua ka kite a muri, mā muri ka ora a mua**

Me te aroha nui

Mrs Dionne Thomas  
***Tumuaki/Principal***



# DEPUTY PRINCIPAL - CURRICULUM



Kia ora e te whānau,

It was fantastic to welcome whānau and their child to our Year 11 and 12 Learning Conversations. These student led conversations provided an opportunity for students to share their academic progress, their commitment to our WELCOME values, and their personal goals. The hours of preparation that went into these conversations were clear, and both whānau and learning conversation mentors deeply appreciated the effort. By working together as a team, we can continue to support every student in achieving their goals.

If you were unable to attend, please contact the office and they will connect you with your child's learning conversation mentor.

For Year 11 and 12 students, fridge magnet credit trackers were distributed on the night. Students who did not receive one, or any Year 13 students who would like one, can collect theirs from the student office. Displaying these in a prominent place, such as the fridge, provides a helpful visual reminder to keep striving.

Study Station, formerly known as Period 6/Homework Centre, is up and running for 2026. Our academic leaders and Academic Institute members are available in the library on Wednesday mornings from 8:00am - 9:00am and Thursday afternoons from 3:00pm - 4:00pm to support any students who need help or simply a quiet space with WiFi to work. Study Station is open to all students, and we strongly encourage those who would benefit from extra support to attend. See the flyer elsewhere in the Kōrero for more details.

As we approach the end of Term 1, our Year 9 and 10 students have completed a series of tests that provide valuable data to help us understand how best to support their learning. Our senior students have begun their 2026 NCEA journey, with most courses having already assessed, or soon to assess, their Term 1 learning.

One of the key systems we use at Karamū High School to help students meet assessment deadlines is Milestones. All NCEA internal assessments include at least one milestone to ensure students are on track and to provide support aligned with the requirements of the standard. If your child misses a milestone, they will receive information from their classroom teacher outlining the situation, next steps, and ways they can help.

Students are encouraged to aim high, as Merit and Excellence credits are viewed favourably by both employers and tertiary institutions. Whānau can access the KAMAR portal at any time to see how their child is progressing toward the academic goals they have set for themselves.

Ms Sarah Gunn  
Deputy Principal - Curriculum



# STUDY STATION



## What is it? A Supportive Space for Learning

Study Station provides a calm, structured environment where students can complete schoolwork with guidance from the school's top academic achievers. With help available in every subject, students can strengthen skills, build confidence, and stay on track throughout the year.

## What Students Can Expect

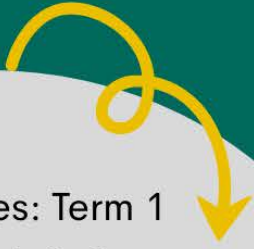

- One-on-one support from high-achieving peer mentors
- Help in any subject, including maths, English, science (specific or general), and more
- A quiet, focused space to complete homework or study
- Encouragement and skill-building to develop strong study habits
- Before- and after-school sessions to suit busy schedules

## Who Can Join in

Open to all students who want extra support, a place to work, or academic extension

## Why It Matters

Study Station helps students feel prepared, confident, and supported. With guidance from top academic leaders, learners gain not only subject knowledge but also the study skills that set them up for long-term success.



Session Times: Term 1  
Before School: 8-9 am  
Wednesdays

After School: 3-4pm Thursdays  
Location: Library



Student Contact for questions  
22029@karamu.nz  
OR  
Amelia Cooper on Teams chat

# DEPUTY PRINCIPAL - PASTORAL

Kia ora e te whānau,



As we approach the end of the first term, many students will be turning their focus to completing assessments and making sure they are on track to achieve their academic goals. With the added pressure and stress of completing assessments, it is important to remember to look after your well-being. Some options you can take to help alleviate stress and help your overall wellbeing:

- Get involved with some form of physical activity.
- Be available for family and friends.
- Manage your time by creating a daily schedule.
- Take some time out for you.

Regular school attendance has a strong correlation with student success. Regular attendance is defined as a student attending school 90% of the time. Attendance at school is important for many reasons:

- Helps learning.
- Supports mental wellbeing.
- Strengthens cultural capabilities.
- Supports gaining of qualifications.
- Fosters opportunities for social interactions.

If your child intends to be absent or you need assistance with their attendance, please contact the school.

I encourage whānau to keep reminding your child to put their phone in their bag during the school day. In the last week, we have had an increase in parents having to collect their child's phone from the school office due to it being confiscated for the third time. To reduce this problem, please continue to have conversations at home about phone management. Consistent messages from both home and school will hopefully reduce phone confiscation during the school day. **Please, as whānau do not message or call your child either.**

Finally, as the weather starts to get cooler, please ensure that your child's jersey and jacket are clearly named. If misplaced, this will enable us to return the item to them immediately.

If you have concerns or questions about your child's welfare, please do not hesitate to contact me or their dean.

Mr Troy England  
Deputy Principal - Pastoral

# STEPPED ATTENDANCE RESPONSE

The Government's target is for **80% of students to attend regularly**, that is to attend school more than 90% of the time



From 2026, all schools must follow the Ministry's **Stepped Attendance Response (STAR) Framework**, which aims for at least 80% of students to attend school more than 90% of the term. The framework groups attendance into four stages:

## **Good Attendance (Fewer than 5 days absent)**

Students are well placed for learning. Families should continue supporting consistent attendance.

## **Worrying Attendance (Up to 10 days absent)**

Absences may begin to affect progress. The school will contact whānau to discuss reasons and provide support.

## **Concerning Attendance (Up to 15 days absent)**

Regular progress is harder to maintain. A formal meeting may be arranged to develop a personalised support plan.

## **Very Concerning Attendance (15+ days absent)**

Learning is significantly impacted. An escalated response will be initiated, which may include external agencies.

**NB:** The Ministry of Education define both justified (ie. medical, bereavement) and unjustified (i.e. truant, holidays) as absence.

# ACTING DEPUTY PRINCIPAL - STAFF

Kia ora e te whānau,



## Safe Travel to and from School: Cycling, Walking, and Restricted Licence Reminders

As we focus on keeping everyone safe on their journeys to and from school, it is essential that students who bike understand the legal and safety requirements. New Zealand law requires all cyclists to wear an approved and securely fastened helmet at all times while riding, whether travelling independently, riding as a passenger, or being towed. Riding without a helmet significantly increases the risk of serious head injury in a crash. NZTA's cycling fact sheet also emphasises that helmets must be in good condition, correctly fitted, and replaced if damaged. In addition to the safety risk, failing to wear a helmet can result in an infringement fee.

For student drivers, please remember that restricted licence conditions are designed to protect you and others while you develop your driving experience. You may drive alone between 5am and 10pm, but outside these hours a supervisor must be seated in the front passenger seat. You are not permitted to carry any passengers who are not your supervisor, including siblings, unless you have an approved exemption. These conditions help reduce distractions and risk, supporting safer decision-making for drivers still gaining confidence on the road.

Earlier this week, our Year 12 and 13 students attended a session with Constable Che, who visited on Monday 23 March to speak about safe driving practices and responsibilities under the restricted licence rules. His presentation reinforced why passenger restrictions exist, the dangers of driving without proper supervision, and the consequences of breaching licence conditions. We appreciate his support in helping our senior students understand the importance of safe driving habits.

We also remind students who walk to school to follow basic road safety guidelines. This includes using designated footpaths where available, crossing only at pedestrian crossings or controlled intersections, avoiding distractions such as phones or headphones near traffic, and staying visible by wearing bright or reflective clothing when walking in low light. Finally, all student drivers must complete the school vehicle registration form, signed by a parent or caregiver, in order to receive a parking pass, which must be clearly displayed on the vehicle dashboard during the school day.

Ngā mihi

Amber Walter  
Acting Deputy Principal

# POLICY REVIEWS

In Term 1 we are continuing to review topics in the **Health, Safety, and Welfare Policy**. The policies include **Alcohol, Drugs, and Other Harmful Substances Policy, Sun Protection, Digital Technology and Online Safety, Cellphones and Other Personal Digital Devices and Safety and Welfare for Students on Work Experience**.

Reviews are open to board, staff, and the school community (parents/caregivers/whānau). Anyone can review any policy/procedure that has a red, review flag.

## To start reviewing:

1. Visit the website <https://karamu.schooldocs.co.nz/1893.htm>
2. Enter the username (karamu) and password (knowledge).
3. Click on the **Reviews** to take you to the policies being reviewed.
4. To start reviewing, click on the name of each Term 1 review topic.
5. Read the policy.
6. Then click the **Start your review** button at the top right-hand corner of the page.
7. Select the reviewer type (Parent).
8. Enter your name (optional).
9. **Add your ratings and comments.**

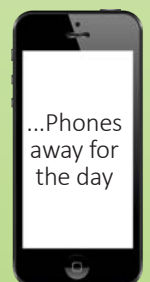


# CONTACTING STUDENTS AT SCHOOL

**Please DO NOT text or call your child during the day.**

You are risking your child having their phone confiscated.

We have mechanisms to contact your child if necessary. The office is the first point of call for parents to get in touch with their children if it is urgent, as the school can ensure the student gets the right support in getting the message at that time. Just as if your child is ill or upset they should come to the office and we will call you, as we can provide first aid and āwhina before we ring you, or an ambulance, if necessary.



# DETAILS UPDATE

**Details update - has your address, email or phone number changed?**

Is the emergency contact still valid? Could they pick up your child during the day if they were ill?

It is *very important* we have up-to-date details on our student management system (KAMAR) so we can contact you if needed. Please contact the school office to update your details if they have changed. Email [office@karamu.school.nz](mailto:office@karamu.school.nz)

# STAYING SAFE WALKING TO AND FROM SCHOOL

We ask you to please reiterate the following messages of AWARENESS but without FEAR

Encourage your child to:

- Walk with friends or siblings whenever possible.
- Use designated footpaths (especially around Windsor Park) and pedestrian crossings.
- Be aware of their surroundings and avoid distractions like phones or headphones.
- Never accept rides or talk to strangers.
- Go straight home after school unless other arrangements have been made.
- If they feel unsafe, seek help from a trusted adult or a safe place like a shop or friend's house.

If they feel like someone is following them:

- Stay calm and don't panic.
- Change direction, cross the street or turn onto a different road to see if the person is still following.
- Walk towards a safe place like a shop, library, or a house with people outside.
- Call or text a trusted adult if they have a phone.
- Do not go home if they feel unsafe, instead, head to a public place or back to school and ask for help.

If a stranger tries to talk to them or offer them a ride:

- Keep walking and don't engage, they don't need to answer questions or be polite (but **don't** swear or be rude, that could aggravate the situation).
- Say "No, thank you" loudly and with confidence.
- Never go near a stranger's car, even if they say they need help or know their family.
- Run to a safe place if they feel scared and tell a trusted adult immediately.
- If a stranger grabs them, they should yell: "Help! This is not my parent!" "Stranger! Stranger!" "Call the police!"

If they can record details of any car or individual acting inappropriately, they **MUST report it to the school office immediately.**

We will then be encouraging whānau to file a Police 105 report.

Thank you for your support in keeping our students safe. If you have any concerns, please do not hesitate to get in touch.

# INTRODUCING KAIAWHINA

My name is Emma Wiggins and I'm the Attendance and Engagement Kaiawhina across Karamū High School and St John's College. In 2024, I was employed by the Whirinaki Kāhui Ako which encompassed nine schools; Karamū and St John's included. Unfortunately, the government wrapped up Kāhui Ako across New Zealand at the end of 2025, however I was fortunate enough to have my contract picked up by both the schools I now work for.



I work on a referral basis, which means that generally, the deputy principal in charge of pastoral care will refer a student to me if they have concerns about the student's attendance. I work with both the student and their whānau to try to work out what the obstacles are to their attendance and develop strategies to overcome these. Sometimes there is the need for a different or alternative pathway to learning for the student, and we're lucky in Hawke's Bay to have several fabulous providers who can offer learning through a different lens.

The most important thing a student can do to better their educational outcomes, is to turn up to school every day. School isn't just about academic achievement, it's about learning how to work within a community, how to socialise with others, how to develop routines and habits that will benefit you throughout your life and it teaches you how to learn.

***Attend today, achieve tomorrow.***

## YEAR 13 BBQ

Photos from the annual Year 13 BBQ that was held on 26 February.



# PULSE WELLBEING TOOL

Following a successful trial in Term 4 2025 we are pleased to roll out the Pulse Wellbeing Tool school wide. This online 60-second weekly check-in gives us a visibility of student wellbeing levels across the school, year levels and mentor classes. It provides a channel for students to speak up so vulnerable students can be better supported, including targeted and rapid interventions, if needed. They can choose the adult they want to receive the 'check in' from, either their mentor teacher, dean, kaiārahi, a deputy principal or a school counsellor. It also has the feature of contributing to building a positive culture, by encouraging gratitude. Students can give a shout-out of gratitude/thanks to a fellow student or a staff member.

We are hugely grateful for the support of the Reid O'Leary Charitable Trust who have supported us financially to provide Pulse for 2026 and 2027. The Reid O'Leary Charitable Trust was created five years ago following the loss of Reid, to suicide. His memory is honoured by working to strengthen mental health support for young people.

They are proud to fully fund Pulse (as part of R.E.I.D Wellbeing Programme) in our school. R.E.I.D stands for Reach, Empowerment, Insight and Development. The programme helps schools better understand how students are feeling, supporting early identification, and timely care. Currently operating in 28 Hawke's Bay schools, their vision is to extend this support to all New Zealand school aged students.

On 9 May the Reid O'Leary Charitable Trust will host the Run for Reido, a community event focused on bringing people together and encouraging open conversations around suicide awareness and mental well-being. To learn more about their mission please visit:

<https://reidolearycharitabletrust.co.nz>

If you would like to support their work, donations can be made directly to: Reid O'Leary Charitable Trust 12-3145-0305490-00. Together we can make a lasting difference in the lives of our young people.

## Giving Back to Karamū High

Thinking of selling, or know someone who is? If you list with me, or refer someone who does, and it results in a successful sale, I'll donate \$500 to support Karamū High School

**Harry Panchal** Residential Sales Consultant  
022 309 5975 | [harry.panchal@pb.co.nz](mailto:harry.panchal@pb.co.nz)

Property Brokers Ltd Licensed REAA 2008



# LAND BASED TRAINING SUPPORT GRANT



We want to keep supporting students at school in as many ways as possible to help them develop a sense of belonging at school and it is exciting that we can launch a new opportunity to support students' co-curricular participation.

We have been very fortunate to have received funding to support individuals with sporting pursuits across the last few years from Apollo Projects and we are hoping this will continue next term.

We now have a new fund available to support co-curricular activities that are not sport ie: cultural, music, arts, academic or careers focused. This is the **Land Based Training Support Grant**.

**Land Based Training** is a leading education provider for people with a passion for agriculture and working with the land. They specialize in developing the next generation of skilled farm workers, livestock specialists and rural professionals, equipping learners with practical, industry-ready skills for careers across New Zealand's primary sector.

The **Land Based Training Support Grant** is for students to apply for that meet the following criteria:

- The funding goes to students who would otherwise miss out. There is a demonstrable need (e.g., disadvantaged circumstances) or a financial barrier to participation in activities meaning the student might not participate;
- The individual shows positive interest, ability or potential;
- Funding would be expected to cover either direct payment of non-sporting co-curricular activity fees or course costs; travel; equipment; uniforms (NB: within school or representing only).

The process is:

- Students apply for a specific amount (to a maximum of \$500 per annum) to the Land Based Training Support Grant via an online form at advertised times.
- Twice a term the applications are reviewed and approved by the grant review team.
- Students and whānau will be contacted of successful and unsuccessful applications. Return of agreements are required for grants to be given.

The first round closes 31 March.



# HEALTH CURRICULUM COMMUNITY CONSULTATION

**Vaping:** Risks, harms and reasons behind vaping.

**Keeping ourselves safe:** Why smoking and drugs (including alcohol) can cause/have harmful effects on their well-being.

**Sexuality:** Relationships (all forms of relationships from friendships, family/whānau, and dating). Physical and emotional changes during puberty. Menstruation, abstinence, contraception, STI's. Consent. Gender themes and messages. Gender role expectations and stereotypes. Whānau can choose under the Education Act to withdraw their children from this section of the health programme. Please contact Mrs Black to discuss.

**Year 10 Health delivered over four terms for 1 hour per week. It involves:**

**Smart thinking:** Goal setting, careers, study skills, self-management, attitudes and values, how to be positive/self-talk, resilience, self-esteem and dealing with depression and where to go to get support.

**Decision Making & Problem Solving:** Strategies to solve problems and make safe decisions in a range of contexts.

**Keeping Ourselves Safe:** Alcohol and its effects on well-being. Harmful effects of illegal drugs. Where to go to get support.

**Sexuality:** Safe & healthy relationships, and where to go to get help if they're in an unhealthy relationship. Abstinence, contraception, STI's. Consent. Identity, gender and sexuality. Effective communication across a range of contexts. Whānau can choose under the Education Act to withdraw their children from this section of the health programme. Please contact Mrs Black to discuss.

We also include well vetted external providers that align with our trained teachers to support the kaupapa of our programmes at appropriate times. These providers are yet to be confirmed for 2026.



# SPORT ROUND UP

## **Hawke's Bay Secondary School Swimming Sports**

Congratulations to all swimmers who competed in the Hawke's Bay Secondary School Swimming Championships on Tuesday 10 March. Te Arahia Katipa-Heremaia, Javarn Ray, Tayah-Leigh Ray, Ryan Rodrigo and Bartly Trotter represented the school with pride, showcasing determination, sportsmanship, and impressive skill in the pool. It was fantastic to see so many personal bests achieved, and our senior swimmers excelled with top-tier placings among a very competitive field. Ka rawe team, your hard work and commitment truly shone!

## **New Zealand Secondary Schools Kayaking Championships**

Congratulations to Ollie Apatu who attend the NZSS Kayaking Championships. He received Silver in the 14&U K1 Long Distance event, Bronze in the 14&U K1 250m heat and A final, and Silver in the 14&U 3x100m relay (Composite team with Gisborne Boys').

## **New Zealand Secondary Schools Waka Ama Championships**

Congratulations to Kaya Wilson and Grace Carson who competed at the Waka Ama Nationals at Lake Tikitapu in Rotoura. This was Kaya's first experience of a Waka Ama Nationals. She made it through to Te Takere U16 B Final and placed 11th, which is no mean feat for her first taster of a competition like this! Grace Carson made it through to Te Ihu U16 final, which is the A Grade final for U16, and placed 8th! Well done!

## **New Zealand Secondary Schools Volleyball Championships**

Congratulations to our volleyball team who has been away at the NZSS Volleyball Champs, placing 10th in Div 3! This was the last nationals competition for the Year 13 students.

## **NZSS Canoe Polo Championship & Cup**

Congratulations to our canoe polo teams who competed 20 - 22 March at the New Zealand Secondary Schools Canoe Polo Championships. Results: Senior A Boys - won silver, Senior B Boys - won bronze in the B grade, Senior A Girls - placed 5th.



Congratulations also to Te Maire Smith-Dunlop for receiving the "Native - Who's Leading Your Team Award" award.

**NZSS Tournament Team** - Congratulations to Max Arcus, Isaac Johnston and Te Maire Smith-Dunlop for making the NZSS Canoe Polo Tournament Teams!

## **East Coast North Island Athletics**

Twelve of our students took on the challenge of the East Coast North Island Secondary School Athletics championship at the Mitre 10 Sports Park on Thursday 19 March. The students represented us with pride and showed excellent self-management skills. Special mentions go to Isabella Hodges who was 4th in the long jump and Layla Whitaker-Mills who was 4th in the high jump. We look forward to seeing what progress the students can make with more training before next year's event.

# SPORT ROUND UP

## Water Polo

This term we entered a senior mixed team with a mix of juniors and seniors. We were coached by Neil Munro, father of Alex (captain). Mrs Hunter was the manager.

We played six games and won four, drew one and lost one. The competition continues in Term 4 and we are currently placed at the top of B grade. This was an excellent achievement as we played against all boys and senior teams. We have some strong junior players coming through.



Water Polo in action



HB Swimming Sports L-R: Bartly Trotter, Javarn Ray, Ryan Rodrigo, Tayah-Leigh Ray, Te Arahia Katipa-Heremaia



NZSS Kayaking Championships: Ollie Apatu



NZSS Waka Ama Championships: Kaya Wilson



NZSS Waka Ama Championships: Grace Carson



NZSS Volleyball Championships



Thank you to @pikitia\_1 & @theclubhouse\_\_\_ for the amazing Canoe Polo photos!

# ACADEMIC INSTITUTE



Earlier this month, Karamū High School proudly hosted its first Academic Institute event of 2026, marking a significant moment of recognition, aspiration, and service within our school community.

Twenty Seven outstanding Year 12 and 13 students were formally inducted into the Institute, continuing a tradition that has shaped academic excellence at Karamū for more than a decade. In 2013, former principal Mr Martin O'Grady launched the Academic Institute with an inaugural group of 29 students. His vision was to create a culture where academic success is celebrated, nurtured, and shared.

The Institute was founded on three guiding purposes:

- Acknowledge and celebrate outstanding academic achievement.
- Encourage and support further academic achievement.
- Provide assistance to Karamū students through service as academic tutors or mentors.

These principles remain at the heart of the Institute today.

We were also privileged to welcome back alumni Yahaira Williams as our guest speaker. Yahaira graduated from Karamū High School in 2015 with NCEA Levels 1, 2, and 3 all endorsed with Excellence. In her final year she served as head student and was awarded Year 13 General Excellence.

Her journey since leaving Karamū has been remarkable. In 2021, Yahaira graduated from the University of Auckland with a Bachelor of Medicine and Bachelor of Surgery (MBChB). She began her medical career as a junior doctor at Rotorua Hospital before returning home to Hawke's Bay, where she is now undertaking her physician training at Hawke's Bay Hospital.

Yahaira spoke candidly about her pathway so far, the highs, the challenges, and the lessons learned along the way. She offered practical, grounded advice to our students as they begin to consider their own futures, encouraging them to stay curious, stay resilient, and stay true to their aspirations.



As we look forward to 2026, the Academic Institute remains a cornerstone of Karamū High School's commitment to excellence.

We congratulate all 27 new members and look forward to the contributions they will make, both in their studies and in service to our wider school community.

# LINE DANCING WORKSHOP



Our dance department's philosophy is to encourage dancers to explore a wide range of dance styles and experiences. On Tuesday 10 March we had the privilege of welcoming Bex from Clive BootScootin for a one-hour line dancing workshop with all the dance students.

The students had so much fun learning some common line dancing moves and grooving together. It was great to see everyone getting involved, building confidence, and enjoying a different style of dance. Thank you to Bex for sharing her knowledge and bringing such a fun energy to the session.



# STUDENT LEADERS



## Community Leaders

Kamaia Mohi, Brodie Russell, Sharon Mathew



## Sport Leaders

Jaime Tipu, Max Arcus



## Performing Arts Leaders

Maia William, Kennedy Lee



## BOT Representative

Maddie Leigh



## Academic Leaders

Vianna Ladia, Kaushik Suresh, Amelia Cooper, Zander Peterson



## Cultural Leaders

Ariana Olotua, Keani Tuala-Fata

# STUDENT LEADERS



**House Leaders  
Heretaunga:**  
Lucy Broad  
Freya Bush

**House Leaders  
Te Mata:**  
Caitlyn Frost  
Alex Munro

**House Leaders  
Tuki Tuki:**  
Halo Karaitiana  
Toby Danes

**House Leaders  
Kaweka:**  
Te Maire Smith-Dunlop  
Sam Nguyen

# NUMERACY AT HOME

Are you interested in helping your tamariki at home with numeracy? Here are some handy hints:

Involve them in the kitchen where they have to change the quantities in a recipe depending on how many you need to feed. Here is an ingredient list:

## ***Fruity Yogurt Pops (Source: Chelsea Winters – Scrumptious)***

*Makes: about 6 (depending on your moulds)*

- 1 cup unsweetened Greek yogurt
- 2 tbsp honey
- $\frac{1}{4}$  cup of milk or cream (optional)
- Fruity variations (pick one)
- 2 punnets fresh berries
- 1  $\frac{1}{2}$  cups frozen berries
- 1 large ripe banana, peeled and chopped
- 1 ripe mango, peeled



How would you make the recipe for 3 people or 12 people or 18 people?

## **A classic - How much more to go to reach to the top of the door?**

- Measure yourself, the floor to the top of the door frame.
- Add your arms to see if you can reach.
- Try a younger sibling or another members of your whānau.
- Use different rulers or even better different measuring systems (imperial vs metric).



# RELAY OUR WAY



## Media Release - Students go the distance for Relay for Life at Karamū High School.

Students, staff, whānau and even a few four-legged friends went the distance at Karamū High School for a Relay for Life fundraiser in support of the Cancer Society.

Led by Year 13 community leaders Kamaia Mohi, Sharon Mathew and Brodie Russell, the student-run event, renamed Relay Our Way, saw students and staff walk laps of the school's 500-metre track today.

The students set a collective goal of completing 2026 kilometres and by the end of the day had surpassed that target, reaching 2544km (5088 laps).

Kamaia said it was encouraging to see so many students getting involved throughout the day.

"It's really cool to see all the students getting out there and putting their 100 percent in because they know it's for a good cause."

The day began with a sunrise memorial walk, where the community gathered in the morning for karakia and reflection to honour those affected by cancer.

"It was really nice," Kamaia said.

"The sun was just rising along the ridge line, and it was a special way to start the day," Brodie said.

Throughout the day, students continued walking laps while fundraising activities such as raffles and a sausage sizzle helped raise money for the Cancer Society.

This year also introduced a new element, with Year 13 students able to bring their dogs along to walk laps of the track, adding extra energy and encouragement for those taking part.

"It's a good chance for them to get out for a walk," Brodie said.

Sharon said the dogs also helped motivate those taking part.

"I think it's good motivation for people going around the course," she said.

The event drew strong support from the wider community, with families, staff and local businesses contributing to the fundraiser. One supporter, Mr Whippy, donated ice creams and sausages, with proceeds also going towards the cause.

For the student leaders, supporting the Cancer Society is a cause that resonates personally.

Kamaia and Sharon said cancer has affected members of their families, making the day particularly meaningful.

"It's really cool to see so many people come out and support," Sharon said.

# RELAY OUR WAY



Knowledge is Strength

| He Mana tō te Mātauranga

KARAMU  
HIGH SCHOOL

# ATHLETIC SPORTS

Athletics was an electric house event on Friday, 13 March, bursting with incredible participation and edge-of-your-seat championship moments. Mr Ross and his team poured in an extraordinary amount of work to bring the day to life, creating an atmosphere where every student could shine, whether they were chasing records or simply giving it their all. The whole event powerfully showcased our value of Excellence: pushing yourself to reach your own potential, whatever that looks like. It's about being your best, not necessarily the best, and the energy proved just how inspiring that can be. [View the athletics video.](#)

## Results:

4th	3rd	2nd	1st
3740	3785	3835	3870
Tukituki	Heretaunga	Te Mata	Kaweka

## Individual Champs Results

Senior Boys		Senior Girls
1st	Caleb Harris	Tawa Honotapu-Marsh
2nd	Toby Danes	Eliana Antonio
3rd	David Son	Lily Antonio

Year 10 Boys		Year 10 Girls
1st	Jack Radonich	Layla Whitaker-Mills
2nd	Isaac Dunn	Cadence Harris
3rd	Taimana Ehu-Thompson	Madeleine Akhurst

Year 9 Boys		Year 9 Girls
1st	Javahn Anderson	Lara Greve Baronceli
2nd	Blessing Faleone	Malia Hanaray
3rd	Ollie Apatu	Lakoda Slade

# ATHLETIC SPORTS



# BEAUTY AND THE BEAST PRODUCTION

The magic is beginning to come to life as our school production of Beauty and the Beast moves full steam ahead.



Rehearsals are now well underway; students from Year 9 through to Year 13 have been working hard after school and at the weekends to bring this much-loved story to the stage.

From dance numbers to powerful vocal performances, every part of the show reflects the dedication and creativity of our talented cast and crew.

Behind the scenes, students and staff have been working closely in not only putting together an amazing production but building confidence, teamwork and lasting friendships.

It's wonderful to see the effort everyone is putting in, and the progress so far promises to be something truly special for the cast and the audience.

We are excited to have our community come and experience the results of all this hard work.

Get your tickets from the school office. Performances will be in the June Clark Centre (Hall) on 14, 15 and 16 May. Prices: Adults: \$20 per ticket, students/children: \$10.



# KARAMŪ HIGH SCHOOL

Production of



Disney

# BEAUTY AND THE BEAST

---

THE BROADWAY MUSICAL

---

Book by  
LINDA WOOLVERTON

Music by  
ALAN MENKEN

Lyrics by  
HOWARD ASHMAN  
& TIM RICE

Originally Directed By  
ROBERT JESS ROTH

Originally Produced By  
DISNEY THEATRICAL PRODUCTIONS

Original Music Supervision & New Arrangements by  
MICHAEL KOSARIN

Dance Music Arrangements by  
GLEN KELLY

Orchestrations by  
DANNY TROOB

7pm Thursday 14th May

7pm Friday 15th May

2pm Saturday 16th May

\$20 adult

\$10 child

@ Karamū High School  
June Clark Centre

©Disney

# SCIENCE



So far this term in science, there have been lots of exciting practicals taking place!

Year 9 students have been observing onion cells under the microscope while learning about plant and animal cells.

Year 10 students have been exploring indicators as part of their acids and bases unit.

Meanwhile, our Year 12 biology students have been dissecting lungs to support their learning about gas exchange, with fish and locust dissections still to come.

# MR APPLE KETE TRIP

The KETE Programme (Karamū transition to Employment or further Training and Education) provides an opportunity to explore career pathway ideas and provide essential skills for entry, workplace, or further studies beyond Karamū High School.

This term the KETE class visited the Mr Apple Orchard. The students learnt about various aspects of the horticulture industry such as health & safety, the diverse range of employment opportunities, engagement with people in the industry, gaining knowledge of the process of growing apples, marketing, and the export markets.

The highlight of the trip for many of the students was picking their own apples to bring back to school and take home. Thank you, Aron Drinkwater, for facilitating our visit.



# STAFF VS STUDENTS SPORTS GAMES

Staff and students recently battled it out in passionate and competitive volleyball and ki o rahi games. A win a piece so far!





### **Help raise funds for Karamū High School!**

New World Hastings has partnered with Karamū High School and now you can help to raise funds each time you do your grocery shopping.

This is a great way to raise extra money for the school through the support of families/friends/relatives who shop at New World Hastings. Every time you shop at New World Hastings and present your Clubcard, Karamū High School will receive 1% of the total spend!

The more families signed up for the programme who scan their Clubcard at the checkout every shop, the more funds you can help raise.

### **How does it work?**

1. Register your Clubcard with Karamū High School
2. Shop at New World Hastings and scan your Clubcard with every shop
3. New World Hastings will then donate 1% of all sales made with participating Clubcards scanned to support Karamū High School

***Please email your Clubcard number to [admin@karamu.school.nz](mailto:admin@karamu.school.nz)***

Once you've registered your card, Karamū High School will reap the rewards every time you shop at New World Hastings!

# TIRA ORA 2003

In this issue of Karamū Kōrero we showcase Karamū's forty first year, the Year 2003.

**Principal:** Mr M J Purcell  
**Deputy Principal:** Mr J M Lynex  
**Deputy Principal:** Mrs J B Clark  
**Deputy Principal:** Mr W Wooster  
**Head Boy:** Marc Pau  
**Deputy Head Boy:** Arepa Paranihi  
**Head Girl:** Michelle Wilson  
**Cup:** Katie Francis  
**Deputy Head Girl:** Hannah Braybrook  
**Dux:** Hannah Braybrook  
**Proxime Accessit:** Phillippa Bennett

**General Excellence:** Michelle Wilson  
**Te Taonga Trophy for Maoritanga:** Crystal Edwards  
**Sportsman of the Year:** Peter Wilson  
**Sportswoman of the Year:** Rachel Morley  
**Sporting Excellence:** Michael Taylor  
**Cultural Excellence:** Alana Zivanovic  
**MacLeod Service**

**School Roll:** 700



Computers in the library 2003

## School:

- New Technology block nearing completion
- Karamu zoning scheme put in place, sees students turned away
- Students encouraged to stay at school sees largest Year 12 in a number of years
- Tony Kane leaves Karamu to become DP at Kapiti College (1986 – 2003), then goes on to be Principal
- Wiremu Whaitiri awarded NZ Order of Merit in New Year Honours (MNZM)

## Students:

- Introduction of School Haka – “He Mana to te Matauranga”
- International students – 34 students from Brazil, China, France, Germany, Japan, Korea, Switzerland, & USA
- No longer mufti for Year 13, with a separate Year 13 Uniform introduced; Boys – Black trousers, white shirt, school tie; Girls – Black skirt, white shirt and a long green/black cardigan
- NCEA Assessment now at Level Two as well as Level One (Bursary still at Year 13)
- Computing compulsory for all Year 9 students

## Sports:

- 5 teams at Canoe Polo Nationals all win medals – 3 students named in NZ Squad
- Tennis a popular sport with courts full at lunch
- Tramping Club established
- Girls' Rugby win the Hawke's Bay Secondary Schools competition
- Senior Girls' Basketball team win Hawke's Bay Interschool competition

## Culture:

- Success at Hawke's Bay Secondary School Kapa Haka festival; Crystal Edwards first female leader; third in Waita-a ringa; second in Poi
- Alana Zivanovic is support soloist for Sir Cliff Richards at the Mission Concert
- Successes continue in Regional Dance
- Interschool Debating successes

## HASTINGS

- Hawke's Bay Expressway to airport opened late in 2003
- For 30 years the partially formed approaches for the Kennedy Rd overbridge had stood incomplete.

# IF YOU HAVE CONCERNS ....

If you are a student and you have a concern ....

If your concern is about .....	You should first see .....	If not resolved, then .....	And is still not resolved .....
<b>Your learning</b> , eg. classwork and assessment	Your teacher	Your dean	Ms Gunn, Deputy Principal Curriculum
<b>A discipline problem</b> , eg. a detention	The teacher who gave you the detention	Your dean	Mr England Deputy Principal Student Management
<b>A pastoral issue</b> , eg. bullying, attendance	Your mentor teacher	Your dean	Mr England or Mr Rolls/Ms Jensen the Guidance Counsellors

If you are a parent and you have a concern ....

If your concern is about .....	You should first see .....	If not resolved, then .....	And is still not resolved .....
<b>A learning problem</b> , eg. classwork and assessment	The dean	Ms Gunn Deputy Principal Curriculum & Assessment	Mrs Thomas Principal
<b>A discipline problem</b> , eg. a detention	The dean	Mr England Deputy Principal Student Management	
<b>A pastoral issue</b> , eg. bullying, attendance	The dean	Mr England or Mr Rolls/ Ms Jensen the Guidance Counsellors	
<b>A financial issue</b> relating to any account or charge	Either Mrs Gray or Ms Brown in the office	Mrs Meiring Principal's EA	

## YEAR LEVEL DEANS 2026

At Karamū High School, our year level deans play an important role in the pastoral care of your child. Our year level deans for 2025 are listed below for your information. Please email your child's dean or phone 878 7139 and leave a message, if you wish to contact them.

### Year 9 Deans



Tash Crawford

t Crawford@karamu.school.nz

### Year 10 Deans



Jade Starck

jstarck@karamu.school.nz

### Year 11 Deans



Julie Burn

jburn@karamu.school.nz

### Year 12 Deans



Jasmine Black

jblack@karamu.school.nz

### Year 13 Deans



Jess Callow

jcallow@karamu.school.nz



Mike Fleming

mfleming@karamu.school.nz



Byron Crawford

bcrawford@karamu.school.nz



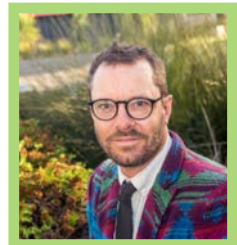
Dave Murdoch

dmurdoch@karamu.school.nz



Paul Mills

pmills@karamu.school.nz



Tom Willis

twillis@karamu.school.nz

## NGĀ POU KAIĀRAHI

### Year 9



Holly Bruce

hbruce@karamu.school.nz

### Year 10



Ashley Blake

ablake@karamu.school.nz

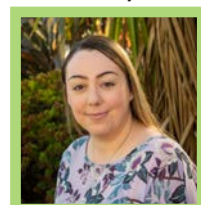
### Year 11



Tom Blake

tblake@karamu.school.nz

### Year 12/13



Rebecca Love

rlove@karamu.school.nz