



## DUX 2024

### Holiday Uniform Shop Hours

27 January - 31 January  
9:00am - 4:00pm

### 2025 Dates to Remember

#### Monday 3 February

Years 9, 12, 13 attend school

#### Tuesday 4 February

Years 9, 10, 11 attend school

#### Wednesday 5 February

Normal timetabled classes

#### Thursday 6 February

Waitangi Day  
No school

#### Friday 7 February

Teacher only day  
No school

### Friday 31 January - Sunday 2 February

Canoe Polo Ataahua Cup

#### Monday 12 February

Year 13s help out at  
Weetbix Tryathlon

#### Saturday 17 February

School ID Photos

#### Monday 19 February

Swimming Sports

Windsor Avenue  
Hastings 4122  
New Zealand  
Postal address  
PO Box 346, Hastings 4156  
Phone +64 6 878 7139  
[admin@karamu.school.nz](mailto:admin@karamu.school.nz)  
[www.karamu.school.nz](http://www.karamu.school.nz)

Elise Lindsay was announced Dux of Karamū High School at the senior prizegiving, on 5 December 2024. Elise gained the highest-grade point average across five NCEA courses. She also gained Distinction and First in Level 3 painting, distinction in chemistry, physics and history.

Elise has worked hard to achieve over the years, earning the top academic excellence award Year 10, 11 and 12, and the top NCEA results for Level 1 in 2022, and for Level 2 in 2023. She was a member of the academic leadership team, helping run a homework centre to support other students. She has also been involved in Year 9 peer mentoring, assisting in Year 9 English classes. Elise has also been strongly involved in the cultural life of the school, participating in the green team, school productions, choirs and orchestra. Outside of school she is a member of robotics team Tu Matarau Pango, competing in the First Technology Challenge.

Elise is the recipient of several scholarships, including Tait Foundation WiE CAN scholarship, Helen Macmillan Brown Bursaries scholarship, the Go Waitaha Canterbury scholarship, and a scholarship from local engineering company, Artifex. She is looking forward to studying a Bachelor of Engineering in 2025.



# PRINCIPAL

Tēnā tatou katoa,

With the second half of this term moving into 'Junior High' it gives us a greater opportunity to focus deeper on the school vision and values.

Our '**WELCOME**' values of . . . . .

**Whanaungatanga** - Positive Relationships, Collaboration, Respect, and School Pride

**Excellence** - Fulfilling Potential, Personal Excellence, Acceleration of Learning

**Leadership** - Initiative, Self-Management, Honesty, Integrity, Reliability

**Creativity** - Thinking Skills; Innovation, Imagination, Problem Solving, Academic Risk Taking

**Overcoming Adversity** - Perseverance, Resilience

**Manaakitanga** - Hospitality, Welcoming, Engaging

**Embracing Diversity** - Accepting Differences, Inclusive

are the core values on which Karamū bases its day-to-day operations.

During Junior High, we recognised **WELCOME Values Warriors** - students who consistently demonstrated respect and upheld our school's values. These individuals showed responsibility and respect toward the school, their peers, and themselves.

Teachers highlighted those who embodied these values through their mahi and conduct around the school. It was wonderful to see several students rewarded with vouchers from local businesses.

As we approach the holiday break, I challenge our students to reflect on how they can continue to live out these values beyond the classroom.

We also continued our focus on consistently demonstrating positive behaviours such as:

# PRINCIPAL

- Helping clean up
- Being respectful
- Showing initiative
- Being kind
- Using manners and compliments
- AND participating and sharing

It was great to see large numbers of students coming over to the office to put their 'Karamū putea' in their house slot. Huge congratulations to 'Heretaunga'.

In the last couple of weeks we also challenged the school to live our 'Proudly Hastings' vision more strongly by being '*Active members of the community*'.

The junior school's enthusiastic involvement in the Christmas Cheer and Women's Refuge appeals was truly inspiring. The generous donations of gifts, food, and contributions to the free dress day were remarkable. Women's Refuge is dedicated to supporting women, children, and whānau in their journey to break free from family violence. Our support for organisations like this reflects our commitment to embracing diversity and practicing manaakitanga. Thank you for giving us the opportunity to show such strong support.

We then of course had two tremendous occasions to be '**Proudly Karamū**' - senior and junior prizegivings. A heartfelt congratulations to everyone who was recognised. Each day, we are proud to witness the growth of our young people as they develop into successful and valued members of society.

From all of us here at Karamū ....

Meri Kirihimete. Merry Christmas.  
Ngā mihi o te tau hou! Happy New Year!

Ngā mihi nui

Dionne Thomas  
***Tumuaki/Principal***



## DEPUTY PRINCIPAL - STAFF

Kia ora e te whānau,



It has been my pleasure to create and construct the new Karamū house trophies this year. The trophies were designed with the idea that they would be a symbol of the challenges fought for in our four houses of Tuki Tuki (blue), Te Mata (orange), Kaweka (yellow) and Heretaunga (red). They are constructed of a rimu post that consists of the wheku at the top and the rings of the houses at the base of the trophy. These rings change in order reflecting the places of the house at the end of the year's challenges. The points for the larger school trophy include athletic and swimming sports as well as our mid-winter competition. The smaller junior trophy is fought for during our junior house events towards the end of the year during Junior High.

The wheku represents te wero, the challenge, not just the physical (a tinana) aspects/nature students must face and overcome but also the social (whānau), mental (hinengaro) and spiritual (wairua) within the context of each event. The face is a representation of past, present and future students of Karamū High School who have attained, are currently attaining, and who are inspired to attain in the future. The intricate designs "nga whakarei" within the wheku represent the whenua (lands) and "nga awa" the rivers pertaining to Heretaunga. He mihi whakanuia ki nga tupuna o te rohe. A tribute and acknowledgement to the ancestors of Ngati Kahungunu Ki Heretaunga which the kura resides within.

The wheku was created by Matua Soloman Blake, the brother of the long-serving Mr Tom Blake and the uncle of Miss Ashley Blake, a past student and current member of our teaching staff.

Once again, thank you to all the students who rose to their challenges this year and made the most of the opportunities to excel and better their best.

Ngā mihi  
Mr Damien Hollands



## DEPUTY PRINCIPAL - STUDENT MANAGEMENT

Kia ora koutou, talofa lava, malo e lelei, kia orana, and warm greetings,



As we fast approach the end of 2024, we reflect on another busy year. Karamū staff and students should be immensely proud of what they have achieved this year. It's pleasing to hear the high level of success across the board.

It is fantastic to see a high number of Year 9 and 10 students demonstrating the WELCOME values over the course of Junior High. Students have been acknowledged by their teacher for demonstrating the WELCOMES values and are placed in the weekly draw for assembly. Congratulations to all students who have been rewarded with a voucher to stores in our local community.

Also, I would like to thank our parents, whānau and wider community. Our success this year reflects your ongoing support. Our community understands the importance of education and learning to help achieve the best outcomes for our students.

Finally, I want to wish everyone a happy holiday season. Stay safe and I look forward to seeing you in 2025.

Ngā mihi nui  
Mr Troy England

## DEPUTY PRINCIPAL - CURRICULUM



Kia ora e te whānau,

Over the past two weeks we celebrated students' successes during the senior and junior prizegiving's. Watching students come across the stage to be recognised for their hard work is always a pleasure. See the enclosed photos of some of our prestigious award recipients.

The results from the recent NCEA examinations will be released mid-January. Students access their results via the NZQA learner portal. It is important that senior students reflect upon their internal and external results to set some goals for 2025. For Year 12 and 13, this reflection will assist them when attending, with whānau, the course selection interviews that run from 27 - 30 January 2025. Further information and how to book an interview will be sent out in the new year. For juniors, taking on board the information in the recently sent junior reports and actioning these suggestions in 2025 will ensure a productive year.

Wishing you all happy holidays and I look forward to working with you in 2025 to support students learning.

Ngā mihi  
Ms Sarah Gunn

# ATTENDANCE

## Parents and caregiver expectations regarding attendance:

- It is your responsibility to get your child to school. If transport is hard for you, let the school know. There may be support available in your area.
- If your child is unable to attend school, please let the school office know why by ringing the attendance line on 870 6143.
- Family holidays or taking time off for recreational activities are not acceptable reasons for being absent.
- Talk to your child about how school is important for their future, and how it is important to go every day. Be positive about school!
- Have a consistent morning routine, not too rushed.
- Help your child to be prepared for school each day.

## What does Absence Look Like?



# POLICY REVIEW

In Term 4 we are reviewing topics in the Finance and Asset Management Policy section. This includes: Managing Income and Expenditure (board), Financial Conflicts of Interest (board), School Donations and Student Activity Payments / Attendance Dues and Other Income Expenditure Asset Management and Protection (board), Property Planning and Maintenance, and Prevention of Bribery, Corruption, Fraud, and Theft.

## Who reviews our policies and procedures?

Reviews are open to board, staff, and the school community (parents/caregivers/whānau). Anyone can review any policy/procedure that has a red, review flag.

## To start reviewing:

1. Visit the website <https://karamu.schooldocs.co.nz/1893.htm>
2. Enter the username (karamu) and password (knowledge).
3. Click on the **Reviews** to take you to the policies being reviewed
4. To start reviewing, click on the name of each Term 4 review topic.
5. Read the policy.
6. Then click the **Start your review** button at the top right-hand corner of the page.
7. Select the reviewer type (Parent).
8. Enter your name (optional).
9. Please ensure you add your ratings and comments
7. Select the reviewer type (Parent).
8. Enter your name (optional).
9. Please ensure you add your ratings and comments.



# IMPORTANT CLIVE BUS INFORMATION

Further to our communication in Term 3, we have now been officially notified that from the end of Term 1, 2025 (11 April 2025), the Ministry school bus service D050315 from the Clive area to Hastings schools will no longer be operating. This means that school bus service D050315 will be cancelled and will not be running from Term 2 2025.

This is the result of a review that the Ministry has recently carried out of its school bus services in the Clive area and is part of a wider review that the Ministry is conducting of all its school bus services in Napier and Hastings.

The majority of the students currently utilising this bus service are ineligible as they either are not attending their closest school, live too close to school or there is public transport available.

From Term 2 2025, students will no longer be able to access Ministry school bus D050315 from Clive to Karamū High School. The Ministry of Education has suggested options for transport next year. This includes carpooling or using the public transport service Route 11 to transport students to school next year. For information on routes and timetables, please visit the Go Bay website.

# ANNUAL IMPLEMENTATION HIGHLIGHTS

Over the last year we have shone the spotlight on the strategic intents from our Strategic Plan in successive Kōrero. We have shared the progress to date, the current focus and next steps.

For this last Kōrero of the year we will highlight the mahi we have done toward our **Annual Implementation Plan** (formally referred to as Annual Targets or Goals). Both of these – our **Strategic Plan – Mahere Rautaki o te kura tuarua o Karamū 2024 - 2026** and **Annual Implementation Plan – Mahere ā tau o te kura tuarua o Karamū 2024** are available on our website (In the Our Documents section).

## Whāinga 4 Annual Goal 4:

Continue to strengthen mātauranga Māori connections with the community, whānau, hapū, and iwi to build reciprocal relationships that support improved learner outcomes.


This annual goal is from the **Strategic Intents**: Ensure that our programmes and pedagogies enhance ākonga engagement; Te Reo me nga tikanga Māori is embedded in the daily life of the school and the curriculum; Leadership in the school is supported through guidance, innovation, and relationships

and the **Strategic Aims: Ako**: Learning and teaching programmes will build on our vision and values

**Hauora**: The wellbeing of everyone in the school community is important

### The baseline data for this whāinga is:

From ERO (2023) the school is on a continuum of:

<p>Establishing ways to support Māori learners to achieve success with a strong, secure sense of their cultural identity.</p>		<p>Māori learners are consistently well supported to achieve success with a strong, secure sense of their cultural identity.</p>
<p>le: We have interacted with the iwi on few occasions; only had conversations with Waiputu; intended to work with Whare Tapere more....</p>		<ul style="list-style-type: none"> <li>- We have developed a strong relationship with Kauwaka through hosting Te Ahu PLD, and Kura Reo here; and participation in Takitini;</li> <li>- We have a good relationship with the likes of Charles Ropitini, Aunty's Garden; mau rakau instructors;</li> <li>- We have strong Māori representation on BoT;</li> <li>- We were involved in the Te Reo Māori NCEA Pilot;</li> <li>- Karakia are embedded in our school and whānau interactions ie: hui, BoT meetings, suspensions;</li> <li>- School haka is being strongly adopted by staff (keen for Tika Tonu) - Ākonga are experiencing tuakana-teina opportunities with Kāhui Ako schools in ki-o-rahi and kapa haka</li> </ul>



# ANNUAL IMPLEMENTATION HIGHLIGHTS

## PROGRESS made to date:

- Te Reo Māori PLD provided for support staff (teachers aides, office staff and administration staff) through centrally funded PLD (via Kāhui Ako) in Term 1 really well received so extended to Term 2.
- Hosted Intermediate Super 6 Ki o Rahi Tournament as a successful promotion of school and opportunity for student leadership.
- Year 9 parents hui had good attendance and positive feedback.
- Biology noho marae held on Friday 5 April with 70 students (had high levels of staff involvement so will need reviewing) included rongoā, noho element.
- Multi-cultural May sees Pasifika, Filipino and kapa haka visits to several local primary and ECE's.
- We host the Whirinaki Kāhui Ako Ki-o-Rahi tournament on 4 July (postponed until 15 August) with over 250 students attending and our Year 10 students used as officials.
- Large groups of students attend the Toitū event in Hastings and two staff attend the language symposium.
- 14 more staff attend Te Ahu o Te Reo Māori PLD in July holidays (and two further full days in Term 3).
- Excess school van has been sold to Waiohiki Marae (a continuation of the relationship post cyclone support in 2023).
- Relationship building with Ngati Kahungunu by offering to support AGM/Pa Sports Day on 23 November by holding netball, basketball and ki-o-rahi here at Karamū.
- Were invited to the opening of the Wharekai at Waiohiki Marae.
- Hosted over 500 students for Whirinaki Kāhui Ako Kapa Haka Festival. Our senior students were MCs and Year 10s performed.

## NEXT STEPS

- Year 10 junior leaders creating 22 holiday kai packages for Waiohiki Kaumatua.
- Karamū tikanga and kawa guide to be created, with guidance and support from staff, pakeke, iwi, whānau.
- Investigation into incorporating carving in Te Reo/Te Ao Māori programmes for 2025.

# POPCORN WITH THE PRINCIPAL

As part of my commitment to engaging more actively with students, listening to their voice and then acting on their suggestions, I started a new initiative this year chatting to a handful of Year 10 students each Wednesday afternoon in my office called 'Popcorn with the Principal'.



It was aimed at Year 10s, with the idea they have been here over a year and will be here for two - three more years so hopefully the voice gathered would be well-thought out and could be put to fruition. Mentor teachers each selected students based on how:

- They met the school values;  
and
- They would be open to dialogue with me.

It was amazing to converse with the students and hear what they love about Karamū or would like to see improved. Demystifying the principal's office has also been an added positive! To be fair their suggestions were few, but from our discussions it has been great to already implement the following:

- More sports gear available at lunchtime
- Long sleeve shirt trial in 2025
- New snacks in the canteen
- Nets for the outdoor hoops
- A new cold external tap for drinking water
- Shared lunches in Junior High



I look forward to starting up with a new group of Year 10s in Term 2 2025.

Here was my last group of Year 10s, 10BCA: Ivan Zhou, Te Orihana Epere, Kirat Rai, Mickayla Park-Fergusson, Phoebe Wilson, Sean Burgiss.

## JUNIOR MENTOR TABLOIDS

Junior inter-mentor class tabloids on the afternoon of Thursday 12 December was a wonderful way to end the year and start our slide into our well-deserved summer break (for both staff and students!). While we had to pivot due to the weather the students certainly enjoyed a reprieve from the previous 30 degree days!

Mentor classes were given the wero of both a clothing theme and theme song. From cops and robbers to Hawaiian shirts, Men in Black to Christmas attire was visible, and the music was just as varied. Hey Ya by OutKast and Rock Around the Christmas Tree were just a couple of the choices. Participation was enthusiastic and the 2025 student leaders were also there to have a good wholesome time.

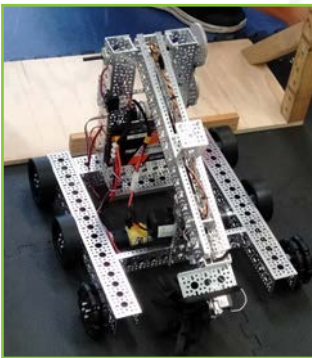
We hope you enjoy this glimpse into the action!

# ROBOTICS

The Karamū High School robotics club is a part of Karamū that embraces innovation, teamwork, and out-of-the-box thinking, and 2024 has been a huge stepping stone for us. We are student-run, and not only have our numbers grown, but our robot has evolved drastically with the team meeting frequently to make it the best that it can be.

Since Term 2, we have been working as a team designing, building, coding, and testing our robot in preparation for the FTC (First Technology Challenge) nationals, which were held in Hawke's Bay, the birthplace of New Zealand FTC competitions. This year, we entered two teams. They performed exceptionally well, finishing third and fifth in the round robin, and advancing to third and fourth places in the finals, a fantastic achievement! To cap it off, one of our teams received the prestigious Innovate award at the nationals, recognising the creativity and ingenuity behind our design.

Over the course of the year, our members have taken turns in all aspects of robotics, and together we have produced a great result. The robot was built with innovation and teamwork, as a big part of the club is collaborating to solve problems to create the best outcome. With the guidance of Jenn McMillan and Andrew Currie, we have become a great team that has flourished together and prepared to do even better in 2025!



# TABLOIDS

# SENIOR PRIZEGIVING

On Tuesday 5 December we celebrated the success of our students at the senior prizegiving. The following prestigious awards were presented to:

Name	Award
Bianca Giugliano	MacLeod Cup for Service to Extra-Curricular Activities
Brianna Williams	Karamū High School Scholarship for Cultural Excellence
Tobey Hughes	Barker Cup for Sportsmanship
Alron Rajal	Roff Cup for the Senior Sportsman of the Year
Payton Quartel-Emile	Karamū High School Cup for Sporting Excellence
Kryzlah Brown	Te Taonga Trophy for contribution to Māoritanga
Portia Bates	Tupu Toa Trophy for contribution and demonstrating leadership in Pasifika
Bostyn Te Whaiti	Wi Rangi Wiremu Whaitiri Memorial Trophy
Maddie Leigh	Karamū High School Year 11 Academic Cup for the highest academic achievement
Jemma Crocket	Karamū High School Year 12 General Excellence Cup for Excellence in Academic, Sport and Culture
Nina Paljk	Karamū School Year 12 Academic Cup for the highest academic achievement
Jerzy Duff	June Clark Trophy awarded to a Year 13 student who has demonstrated the vision and values of Karamū High School throughout the year
Zane Taylor-Gee	Karamū High School Prize for the Year 13 General Excellence Sir Paul Holmes Memorial Cup for Year 13 General Excellence for Excellence in Academic, Sport and Culture
Annelise Melchers	Karamū High School Prize for the Proxime Accessit to the Dux Clark Cup for Proxime Accessit to the Dux
Elise Lindsay	Karamū High School Prize for the Dux Karamū High School Toki for the Dux Karamū High School Dux Cup

# SENIOR PRIZEGIVING



Bianca Giugliano



Brianna Williams



Tobey Hughes



Alron Rajal



Payton Quartel-Emile



Kryzlah Brown



Portia Bates



Bostyn Te Whaiti



Maddie Leigh



Jemma Crocket



Nina Paljk



Jerzy Duff



Zane Taylor-Gee



Annelise Melchers



Elise Lindsay

# CHRISTMAS CHEER APPEAL

***Making a difference for others can be as simple as offering a smile.***

A friendly gesture can brighten someone's day, whether you're at a store, at school, or simply passing by on the street.

For someone having a rough day, a smile can make a world of difference. And as the saying goes, it takes only 17 muscles to smile, compared to 43 to frown.

Another powerful way to make a difference is by truly listening. In a world dominated by technology, genuine face-to-face interaction is becoming rare.

Next time you ask someone, "How are you?" take a moment to really listen to their answer. Show that you care by asking thoughtful questions, and let them know you're fully present and engaged.

But for us this year in Junior High we have gone beyond simply smiling or listening to make a difference for others.

By drawing on our school values of creativity and manaakitanga we brought small items from home and a gold coin donation on Tuesday 3 December for a Free Dress Day to make a difference.

It has been a pleasure to do this for the Christmas Cheer Appeal and the Hastings Women's Refuge - a really good opportunity to link our school vision of Proudly Hastings, the Women's Refuge vision of having all women and children in Aotearoa living free from domestic and family violence.

***Naku te rourou nau te rourou ka ora ai te iwi.***

***With your basket and my basket the people will live.***

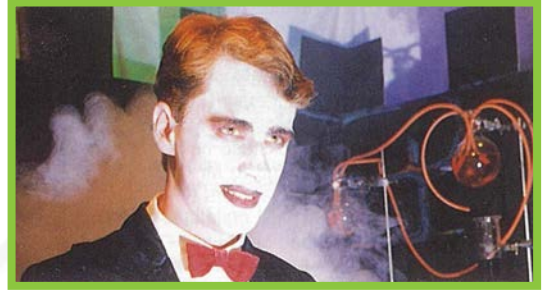


Junior Leaders with the Xmas Cheer Collection

# TIRA ORA 1993

In this issue of Karamū Kōrero we showcase Karamū's thirty first year, the Year 1993

<b>Principal:</b>	Mr M J Lewis
<b>Deputy Principal:</b>	Mr A J Vester
<b>Assistant Principal:</b>	Mrs J B Clark
<b>Karamu High School Board of Trustees:</b>	Mrs J Mills
<b>Head Boy:</b>	Manu Barcham
<b>Deputy Head Boy:</b>	Andrew Wilmott
<b>Head Girl:</b>	Francine Johnston
<b>Deputy Head Girl:</b>	Nerolee Jackson
<b>Dux:</b>	Janine Boxall
<b>Proxime Accessit:</b>	Nicole Gardner
<b>Te Taonga Trophy for Maoritanga:</b>	Louise Sidney
<b>MacLeod Service Cup:</b>	Nerolee Jackson
<b>Sportsman of the Year:</b>	Michael Brightwell
<b>Sportswoman of the Year:</b>	Kylie Sutherland



Dracula Spectacular Production 1993

## School, Buildings & Grounds:

- Mrs Shirley Chubin retires after 15 years as HOD of Work Experience Unit (1977 – 1992)
- Second Computer room set up

## Students:

- Modular approach for Year 9 options sees 6 week modules – allows a greater range of options
- Computing offered at Senior levels and computer use/applications in all subjects at every level
- Major curriculum changes are planned, including Technology, Photography introduced in Sixth Form, Retail & Employment Skills, Outdoor Education - for 6th & 7th Form
- Kwisports taught by Karamu students to Mayfair & Parkvale students
- Student exchanges –still popular including Marina Leva from Brazil & Flo Rusch from Switzerland; Jane Struthers leaves for year in Canada; Byron Watt year in Canada; Aaron Hantler year in Sweden; Ardele Hammond year in Minnesota, USA
- Clare Struthers (Karamu) and Cindy Hazell (Australia) do Rotary twin exchange
- Vision testing for Fourth Form students

## Culture:

- Reuben Whakamoe represented Hawke's Bay in Māori Oratory finals & won the Sir Turi Carroll Trophy in the Junior section
- Dance – winners of Junior and Senior sections in Regional Dance Festival
- School Production – “Dracula Spectacular”
- Winterfest 2 hour concert – 20% of students participate
- Annual House Drama competition

## Sports:

- Surfing group grows to 37 students

## HASTINGS

- Hawke's Bay Polytechnic opens Twist Library
- 6.1 Magnitude Earthquake
- Flaxmere College opens
- \$1.4 million face lift for Hastings West End
- Pacific Hotel closed

## NEW ZEALAND

- NZ Government: National, NZ Prime Minister: Jim Bolger, General Election, Referendum of MMP, NZ First Party formed, Centennial of Women's Suffrage

## WORLD EVENTS

- USA President: Bill Clinton, UK Prime Minister: John Major, The borders between EU countries disappeared physically, The common market made way for the European Single Market, Introduction of Windows 3.1, World Trade Centre in New York bombed.



Dracula Spectacular Production 1993

# IF YOU HAVE CONCERNS ....

If you are a student and you have a concern ....

If your concern is about .....	You should first see .....	If not resolved, then .....	And is still not resolved .....
<b>Your learning</b> , eg. classwork and assessment	Your teacher	Your dean	Ms Gunn, Deputy Principal Curriculum
<b>A discipline problem</b> , eg. a detention	The teacher who gave you the detention	Your dean	Mr England Deputy Principal Student Management
<b>A pastoral issue</b> , eg. bullying, attendance	Your form teacher	Your dean	Mr England or Mr Rolls/Ms Jensen the Guidance Counsellors

If you are a parent and you have a concern ....

If your concern is about .....	You should first see .....	If not resolved, then .....	And is still not resolved .....
<b>A learning problem</b> , eg. classwork and assessment	The dean	Ms Gunn Deputy Principal Curriculum & Assessment	Mrs Thomas Principal
<b>A discipline problem</b> , eg. a detention	The dean	Mr England Deputy Principal Student Management	
<b>A pastoral issue</b> , eg. bullying, attendance	The dean	Mr England or Mr Rolls/ Ms Jensen the Guidance Counsellors	
<b>A financial issue</b> relating to any account or charge	Either Mrs Gray or Ms Brown in the office	Mrs Meiring Principal's EA	

## YEAR LEVEL DEANS 2024

At Karamū High School, our year level deans play an important role in the pastoral care of your child. Our year level deans for 2024 are listed below for your information. Please email your child's dean or phone 878 7139 and leave a message, if you wish to contact them.

### Year 9 Deans



Tash Crawford  
tcrawford@karamu.school.nz

### Year 10 Deans



Sam Overweel  
soverweel@karamu.school.nz

### Year 11 Deans



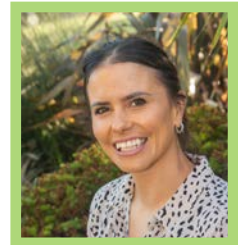
Jess Callow  
jcallow@karamu.school.nz

### Year 12 Deans



Amber Walter  
awalter@karamu.school.nz

### Year 13 Deans



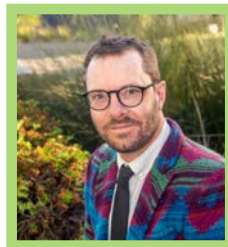
Jasmine Primmer  
jprimmer@karamu.school.nz



Mike Fleming  
mfleming@karamu.school.nz



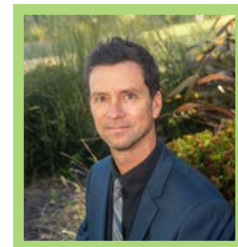
Byron Crawford  
bcrawford@karamu.school.nz



Tom Willis  
twillis@karamu.school.nz



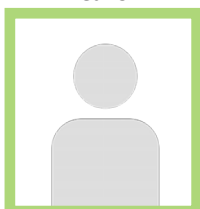
Dave Murdoch  
dmurdoch@karamu.school.nz



Justin Kite  
jkite@karamu.school.nz

## NGĀ POU KAIĀRAHI

### Year 9



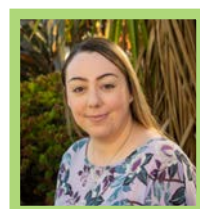
(Currently vacant)

### Year 10



Ashley Blake  
ablake@karamu.school.nz

### Year 11



Rebecca Love  
rlove@karamu.school.nz

### Year 12/13



Tom Blake  
tblake@karamu.school.nz