



Uniform Shop Hours

Wednesdays

10:55am - 11:35am

3:00pm - 4:00pm

2024 Dates to Remember

Friday 23 August

Green Team Trip to Waiaroha Heretaunga Water Discovery Centre

Monday 26 August

Kobe Noda Japanese Students Visit to Māori Performing Arts

Tuesday 27 August

Level 1 Commerce Market Day on the Circle

Wednesday 28 August

L3 Art Trip to see top NCEA Art portfolios

Thursday 29 August

Year 12 Leadership Session at Iona College

Thursday 29 August

Kobe Noda visit to Ranui Farm

Friday 30 August

Free Dress Day - Daffodil Day

Monday 2 September

L3 Art Trip to see top NCEA Art portfolios

Monday 2 September - Friday 6 September

Winter Tournament Week

Tuesday 3 September

Y11 Whakapiki Ake visit Careers Centre/Whare

Friday 6 September

Year 12/13 Study Day

Friday 6 September -

Saturday 7 September
Tira Ora 70s Celebration

12 - 17 September

Year 11-13 Derived Grade Exams/
Workshops

Windsor Avenue

Hastings 4122

New Zealand

Postal address

PO Box 346, Hastings 4156

Phone +64 6 878 7139

admin@karamu.school.nz

www.karamu.school.nz

1st XV Rugby

Karamū High School rugby has made a triumphant comeback this year, surging to new heights with a string of victories and a promotion to a higher grade after several seasons of struggling to field a team. Strong rugby advocate Mr Blake says they are rapt to be able to field a team, and proud of the boys for the results they have achieved so far. We began the "rebuild" for rugby in 2022, with 24 boys from Year 9 to 11 all signing up for the E Grade team. Last year, we fielded two teams: junior (Year 9 and 10) and senior (Year 11 and 12), with a total of 36 rugby players signing up.

We had a combined 1st XV with HNHS and this year we have fielded our own 1st XV. This year's team, coached by Mr Murdoch and Mr Arcus, has had a "great season" in the Division 2 grade and this weekend will face Te Aute in the final.

Mr Blake says the revival has been driven by interest from a small group of students, and helped by support from school leadership, former students, the Havelock North Rugby Club and the Hawke's Bay Rugby Union.

"I think we offer them what's required to get them on the paddock, with a huge focus of camaraderie, fun and to play a bit of code." They have found the impact is felt as much off the field as it is on. "I know the difference that it makes for the boys. It lifts them, it gives them a sense of purpose, and it gives them more reason to come to school. They're going to want to come to school so they can do training," Mr Murdoch says. "Once they've got some confidence in them, they turn into different people. It settles them. And then you see them grow within the sport. You also see them grow mentally in the class a bit better too." They have had a number of wins, and some close tests against the region's boys' schools. "And you see the spring in their step. Yeah. And Monday morning, they can't wait to tell you", Mr Blake says.

Year 13 sports leader and captain Oliver Arcus says it has been good to be able to represent Karamū in rugby. "For the last two years we had a mixed team with Havelock, and now we've got our own team. So it's been good to be able to represent school because in my first two years at Karamū I had to play for St. John's and Havelock North, instead of Karamū." He is thankful to Karamū for providing ways to get him, and other boys who want to, out on the paddock.



Karamū High School's 1st XV Rugby Team pictured with coaches Mat Arcus (right) and Dave Murdoch after a 43-32 win over HNHS 1st XV

PROUDLY
KARAMŪ

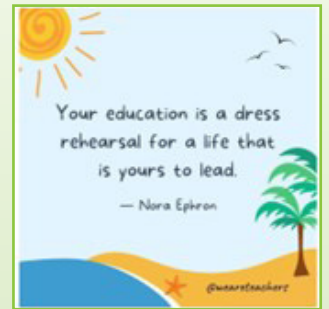
PROUDLY
HASTINGS

PROUDLY
LEARNING

PRINCIPAL

Kia ora e te whānau,

This term as a school we are focusing on the school value Whanaungatanga. It is a complex value that refers to relationships formed through shared experiences and working together, which provides people with a sense of belonging. At Karamū we further define it as including positive relationships, collaboration, respect and school pride.



If we collectively understand and demonstrate the behaviors associated with the value whanaungatanga we will collectively build a safe and supportive culture at Karamū High School.

For the first couple of weeks I have spoken to the students about school pride. School pride typically refers to a sense of belonging, loyalty, and enthusiasm that students, ex-students, teachers, and even whānau feel towards their school. It can look like several things but here at Karamū High School it is:

- An Emotional Attachment: Feeling a strong emotional connection to Karamū. ie: Our name is not only based on the plant Karamū, but the whenua/area on which we sit;
- Support and Loyalty: Supporting school activities, sports teams, achievements, and events. ie: Cheering and clapping like crazy every time Karamū is playing (and of course winning);
- A sense of Identity and Belonging: Seeing Karamū as a part of one's identity and feeling a sense of belonging within our community. ie; We are Proudly Mayfair, Proudly Hastings, Proudly NZ;
- Celebrating our Achievements: Taking pride in the accomplishments of people from Karamū. We have many proud alumni like Meka Whitiri, Annah Stretton, Sir Paul Holmes and our most recent Olympian - kayaker Aimee Fisher;
- Having school traditions, rituals, and events that are ours and ours alone like Blossom Day; and finally
- A Positive Reputation: In the community we have a reputation that can be good or bad, and everyone has a part to play in that from when you leave home to when you return.

I am exceptionally proud of our school and I want every one of our students to also be so we can continue to build a safe and supportive culture here at school for everyone. As whānau you can support us in this goal by ensuring your child is behaving, acting and dressing appropriately at all times when representing the school - from when they leave home, to when they return. #ProudlyKaramū.

Ngā mihi nui tatou katoa

Mrs Dionne Thomas
Tumuaki / Principal



DEPUTY PRINCIPAL - CURRICULUM

Kia ora e te whānau,



"Champions do not become champions when they win the event, but in the hours, weeks, months, and years they spend preparing for it. The victorious performance itself is merely the demonstration of their championship character."

As we approach the critical Derived Grade School Examinations/Workshops in just four weeks, this quote underscores the importance of diligent preparation and unwavering commitment.

During the upcoming 4-day exam and workshop period, 12 - 17 September, our students in Year 12 and 13 will have the option to study from home if they do not have an examination or workshop scheduled for that day. This flexibility is designed to allow students to focus on their preparation in a conducive environment. However, as with all study leave, it is crucial that students use it responsibly. Any misuse of this privilege, such as not engaging in productive study, gathering in town or working extra job shifts will result in the loss of study leave privileges at the end of the year.

Year 11 students will be required to be present at school for the full day during the entire 4-day period, including attending their usual Period 3 class. This ensures that they continue their regular learning activities and benefit from the structured environment of the school.

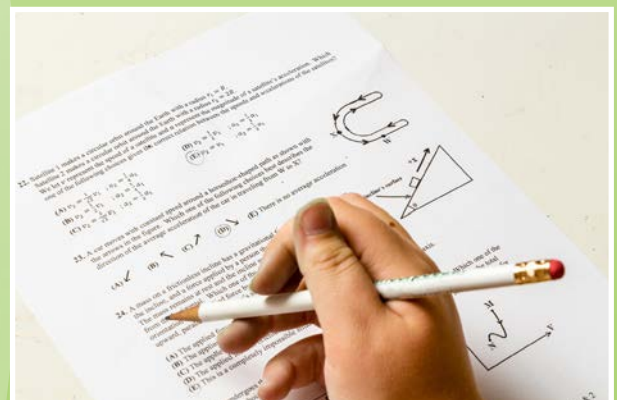
As always, the school library will be available to all seniors who wish to study at school.

The Derived Grade Exam and Workshop timetable will be shared with students next week. They will be supported by their mentor teachers to ensure that they know where and when their exams/workshops occur.

For more details on the specific Year 12 and 13 study day, please refer to the article on the next page. Let's all stay focused and dedicated as students approach this important phase in their academic journey.

Ngā mihi

Ms Sarah Gunn
Deputy Principal - Curriculum



DEPUTY PRINCIPAL - STAFF

Kia ora e te whānau,



I am sure like me you have been watching the Olympics over the past few weeks. The opportunity to start and participate in sports and extra-curricular activities should be encouraged for all our students. Not only does it give students the opportunity to develop their skills in a particular sport, it also helps to make connections with their peers and other schools within the region. As we wind down from our winter sports, it has been a great opportunity for many of our students to add another part to their high school experience, to make new friends and at least, have a blowout at least once a week. We are now looking towards our summer sports and junior volleyball is always a hotly contested sport. It is great to see many students getting out at both breaks getting ready for the season. Like all of our sports we have a spot for everyone and I would encourage students to take up an opportunity in Term 4. Good luck to our teams competing in winter tournament in Week 7. We look forward to seeing your progress throughout the week.

As many of our Year 12 students continue to get their restricted licence, can they please ensure their cars are registered to drive to school, by filling out the form at the office. If you are a parent picking up, can you please not use the front car park. This is reserved for our students who need extra mobility assistance. It does get busy around 3pm so your help with this would be appreciated. If you are picking up from Beatson Road, can you please turn left when exiting as this speeds up the exit for everyone.

Ngā mihi

Mr Damien Hollands

Deputy Principal - Staff

FOOD AT SCHOOL

We are very fortunate *every* child at Karamū is provided a healthy meal each day. Our canteen also sells a selection of healthy and treat foods for break two. We pride ourselves on being a water and milk only school. *No fizzy drinks or energy drinks are sold on site or to be brought to school.* We also offer Breakfast Club every Monday, Tuesday, Thursday and Friday morning 8-8.30am on the tables outside the canteen. This is provided by the school for anyone that has early morning training, arrives at school early or just wants to pick up fruit, cereal or toast.



Because of our drive for healthy food options and the logistics in managing over 900 students at break times we ask students *not to have food delivered or dropped to school by commercial outlets* (ie: Pizza delivery, UBEReats etc). If parents need to drop food off for a specific reason they should do so to the office and we will get a message sent to your child indicating it is available to pick up.

DEPUTY PRINCIPAL - STUDENT MANAGEMENT



Kia ora e te whānau,

Term 3 is now well underway, and it's been fantastic to see so many students working hard to achieve their academic goals. I encourage students to continue demonstrating high levels of motivation to achieve the success they deserve.

Can you please check that your child has the necessary equipment for school. There has been increased concern among staff that students are not fully equipped for school. To learn and maximise chances of being successful, students need to bring the correct equipment to school every day. If you need to borrow a device for the remainder of the year, please see the office – they will be able to provide you with all the necessary information.

For the vast majority of this term, we are shifting our focus to acknowledging students for demonstrating positive behaviour. As a school, we want students to be recognised for going above and beyond what is expected from them. After all, these are the behaviours we want them to consistently demonstrate in wider societal life.

Finally, can you please check that your child has access to the correct school uniform. As the colder months are upon us, we are starting to see a number of students wearing non-regulation uniform items. We have several jerseys and jackets available for student use, so please direct your child to the main office. If there are any other uniform issues that the school needs to be aware of, please get in contact with your child's dean.

If you have concerns or questions about your child's welfare, please do not hesitate to contact me, or their dean.

Ngā mihi
Mr Troy England
Deputy Principal - Student Management



KARAMU HIGH SCHOOL

Don't let the results and the outcomes
of the past **define who you are.**

It's what you **do now**
and **moving forward** that **will define**
who you are going to be.

POLICY REVIEW

In Term 3 we are continuing to review topics in the Employer Responsibility Policy section (which includes Concerns and Complaints, Media, Performance Management, Professional Development, Protected Disclosure, Staff Conduct and Staff Leave)

Who reviews our policies and procedures?

Reviews are open to board, staff, and the school community (parents/caregivers/whānau). Anyone can review any policy/procedure that has a red, review flag.

To start reviewing:

1. Visit the website <https://karamu.schooldocs.co.nz/1893.htm>
2. Enter the username (karamu) and password (knowledge).
3. Click on the Reviews to take you to the policies being reviewed
4. To start reviewing, click on the name of each Term 3 review topic.
5. Read the policy.
6. Then click the Start your review button at the top right-hand corner of the page.
7. Select the reviewer type (Parent).
8. Enter your name (optional).
9. Add your ratings and comment



1970S CELEBRATION

REGISTRATION IS NOW LIVE!! CLOSING 31 AUGUST

DID YOU OR SOMEONE YOU KNOW ATTEND KARAMŪ IN THE 70S?

We will be hosting a reunion of those that started Karamū High School in the 3rd form from 1970 to 1979 on **6 & 7 September 2024**

To register your interest email: **tiraora@karamu.school.nz**

Spread the word with friends and whānau

ANNUAL IMPLEMENTATION HIGHLIGHTS

Over the last year we have shone the spotlight on the Strategic Intent from our **Strategic Plan** in successive Kōrero. We have shared the progress to date, the current focus and next steps. For the remaining Kōrero this year we will highlight the mahi we have done toward our **Annual Implementation Plan** (formally referred to as Annual Targets or Goals). Both of these – our **Strategic Plan – Mahere Rautaki o te kura tuarua o Karamū 2024-2026** and **Annual Implementation Plan – Mahere ā tau o te kura tuarua o Karamū 2024** are available on our website (In the Our Documents Section).

Whāinga 1 Annual Goal 1: *Create Year 9 courses that are fit for purpose*
*This Annual Goal is from **Strategic Intent:** Ensure that our programmes and pedagogies enhance ākonga engagement; and the **Strategic Aim: Ako:** Learning and teaching programmes will build on our vision and values*

The Baseline data for this whāinga is:

- Ākonga pick 7 options from 14 with each option being for one term (except languages)
- Recent trends: (but these can change each year too)
 - Food and Business growing in popularity
 - Dance, Music and Drama numbers decreasing
- DIT is compulsory (as Digital Curriculum compulsory since beginning of 2020)
- Only new option introduced recently is Spanish in 2022
- Issues:
 - We have teachers that are able to, and those that cannot, teach several courses
 - We have limited spaces for some options ie: Food
 - Students picking options on
 - o Exposure to technology at Year 7/8
 - o Sibling/whānau voice
 - o Open night exposure
 - o Possibly no information about the likes of DVC, Drama, Dance, Business Studies that they have not had exposure to

PROGRESS made to date:

- Teachers of core Year 9 classes collaborate and share learning strategies that are working for their classes, DP-Learning collates and shares good strategies. Option teachers encouraged to look at common student threads.
- Professional Development for whole staff is held on Universal Design for Learning. Universal Design for Learning (UDL) is a people-first design framework that guides the design of learning experiences to proactively meet the needs of each and every ākonga. When kaiako use UDL, we anticipate barriers to learning in the design of the environment, and plan in a range of useful supports, options and tools so each ākonga see what works for them. UDL is based on neuroscience and evidence-based educational practices.
- The Kāhui Ako is working on literacy strategies from Year 6 - 9, including assessment using e-Astle.
- Nga Pou Kaiārahi run professional development session with staff on forming positive relationships with ākonga to support their learning.

NEXT STEPS

- Common student voice tool created with input from all faculties.
- Student voice collected around how they pick options.
- Tracking of students numbers across year levels.

MUSIC ROOM RENOVATIONS

Exciting Renovations Set to Elevate Our Music Faculty

We are thrilled to share we are set to start the major renovation project that will transform our music faculty into a state-of-the-art facility, designed to inspire creativity, foster collaboration, and support our students' musical journeys. The renovation project is a testament to our commitment to providing exceptional educational experiences and resources. Our vision is to create an environment that not only meets the demands of modern music education but also exceeds expectations by integrating advanced technology and creating dynamic spaces for performance and practice.



State-of-the-Art Practice Rooms: We are upgrading our practice rooms with the latest soundproofing technology. Each room will feature customizable acoustics, allowing students to tailor their practice environment to their specific needs. **Innovative Performance Space:** The renovation will introduce an indoor/outdoor flexible performance space designed to host a range of events, from intimate recitals to full-scale concerts, ensuring that our students and faculty can showcase their talents in an innovative setting making use of the natural environment.

A More Modernised Classroom and Lab: Our classroom and an adjacent electronic/digital lab will be updated with advanced technology, including software for music composition and analysis. This will enhance the learning experience and provide students with the tools they need to excel in their studies.

Upgraded Facilities and Amenities: The renovation will also include improvements to all areas, including secure storage and modernised administrative offices to better support our faculty and staff.

Timeline and Impact: The renovation is starting now, with an anticipated completion date of February 2025. During this period, we appreciate your patience as we work to enhance our facilities. We appreciate with all building work it requires agility and flexibility on behalf of others – this is being most felt by the itinerant music staff who will be teaching in other spaces around the school - we thank these staff and their students for their patience.

Thank you for your continued support and enthusiasm. We can't wait to unveil the new and improved music faculty and celebrate the next chapter in our rich musical tradition! Stay tuned for more updates, and let's look forward to a future filled with harmonious possibilities!

MUSIC ROOM RENOVATIONS



Students clearing out on a rather wet day

SECONDARY SCHOOLS BADMINTON

The following students had a great day recently at the Hawke's Bay Secondary School Badminton Tournament.

Singles:

Kaushik Suresh

Runner up in B grade

Simon Saldivia-Greville

Reached the semifinals in B grade

Mati Dziubek

Reached the quarter finals in B grade

Jadon Daley

Reached the quarterfinals in A grade

Jynav Maharaj and Ivan Zhou

Both played in C grade and made great improvements in their games.

Doubles:

Jadon Daley and Kaushik Suresh

Winners B grade

Mati Dziubek/Simon Saldivia-Greville

5th B grade

Ivan Zhou/Jynav Maharaj

4th in their group in C grade



CAREERS

Gateway Opens Vocational Pathways for our Students:

Gateway is a career pathway from school to the world of work offered to Year 12 and Year 13 students. Students spend one day a week during a term at a workplace of their career interest.

During this time, the student is treated like an employee where they gain valuable career related skills. At school, students are offered career related theory Unit Standards and practical Unit Standards. These credits go towards their NCEA results.

This year we have had 24 students on placement in the Hawke's Bay community. The students have had placements in the following industries: early childhood, aviation, animal care, construction, automotive, tourism, barbering, electrical and retail.

Through the Gateway programme, our students have the opportunity to gain apprenticeships, full-time and part-time work as well as hands-on industry experience.

We appreciate the continued support from our loyal local businesses who invest in our students' futures through the Gateway programme.

If you are interested in being part of the Gateway Programme in 2025, please come and see Mrs Aroha Grapes in the careers centre.



From top left: Amie Osborne, Henry Cox, Piper Nukunuku, Tobias McConaghty, Janese Rangiwai, Leyton Makea, Christina Antonio, Soul Johnson-Tupe, Tazzy Garnham-Stark, Rylee Smith

CAREERS

Learner Licence Support Programme



The careers staff along with NZ Police will be running our second Learner Licence Support Programme during the next school holidays from Monday 30 September - Wednesday 2 October 2024.

If you are 16 years and over and do not have your Learner Licence, then please come and see Mrs Aroha Grapes in the careers centre to find out more.

DERIVED GRADE EXAMS/WORKSHOPS

Derived Grade Examinations and Workshops Period

From 12 - 17 September we will be holding very important Derived Grade Examinations and Workshops for Year 11 to 13 students across the Level 1, 2 and 3 courses.

The examinations are not only a pre-requisite to sitting external NCEA Examinations at the end of the year, but they give students valuable practice in examination and revision techniques and allow students to receive feedback to work on their weaknesses and build on their strengths.

The grades will also be used as 'derived' grades should students need them for justified absences (according to Ministry of Education guidelines) up to/in the end of year examination period.

The workshops give focused periods of time for students with teachers to work on larger periods of work that cannot be done in a 50min period ie: Art and DVC.

In order for students to be prepared for the condensed nature of this period we are allowing a study day for Year 12 and 13 students on Friday 6 September. If they would prefer to be in supervised study the library will be open.

We know the Year 12 and 13 students will use this time wisely. Students found not using study leave responsibly will lose the privilege to take study leave at the end of year. Students should not ask for or accept extra hours of work or gather in town on this day or in the period following.

A timetable of the **Derived Grade Examinations and Workshops Period** will be shared with students within the next week.



VOICE OF RANGATAHI

Voice of Rangatahi Sport HB Survey

Sport Hawke's Bay will soon be circulating an online survey with secondary school students across the region. The following information will explain how and why we are conducting the survey at Karamū High School.



Why are we surveying rangatahi (young people)?

Young people are important to us, and experiences during secondary school years can inspire or discourage a life-long involvement in physical activity.

We want to ensure that rangatahi have great sport, physical activity and active recreation experiences at school and the more you know about a population group, the better placed you are to provide opportunities and experiences that meet their needs, ultimately supporting a lifelong love of being active - we need to be making decisions that are informed by the audience who we are looking to cater for.

Why will the survey be in schools?

We want to find out what more can be done to support schools and teachers, and link schools to sport and recreation organisations in their communities. We are targeting secondary schools from across the country, so we have information from a cross-section of rangatahi across New Zealand.

We want to survey all secondary school students and school is the best place to reach young people.

Do schools have a say in how and when the survey is administered?

Yes. The survey is circulated to students and is completed online. It is up to the school as to when and where the survey is completed. The survey has been set up, so it is easy for schools and students to take part at a time which is convenient for them.

Data Protection

Students will have their say but the survey is anonymous and therefore students will not be identifiable. Any comments the students make in their response is included anonymously in reports available to the school, to Sport Hawke's Bay and to Sport NZ.

If for any reason you do not want your child to participate in the survey you are welcome to opt your child out of taking part.

To opt your child out

Please email: darnott@karamu.school.nz by Friday 23 August.

KARAMŪ WELCOMES KOBE NODA



Kobe Noda and Karamū Students during and after the powhiri

A group of high school students from Kobe Noda High School in Japan were welcomed to Karamū High School on Monday 19 August. They are here as part of a sister exchange and will be taking part in various activities and outings while they are in New Zealand including a Māori performance and visit to Ranui Farm. The students are staying with homestays while they are in Hastings, before they are farewelled on Friday 30 August.

Some of our Karamū students are then lucky enough to visit Kobe Noda High School in Japan and stay with the Japanese students families when they travel there at the end of September/early October.

BEATS AND TREATS

On Wednesday 14 August, the Level 1 music class put on a 'Beats and Treats' performance evening in our school hall. It was a well attended event, and the audience showed great support. The audience were then treated to super after the performances. Well done to the Level 1 Music students! They did an amazing job!



Amelia Cooper



Ronnie Butler



Rocky and the Lads

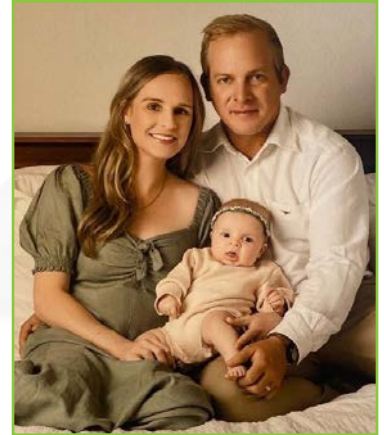
STAFF UPDATES



Mr and Mrs Callow



Mr Herbert, baby Vera and partner Holly



Mrs Starck with husband and baby

At this time of the year it is not unusual for us to start having staffing movement.

We are very excited to welcome back **Mrs Jade Starck** from maternity leave.

- **Mrs Callow** will return from maternity leave in Term 4.
- In the holiday period **Mr Jordan Herbert** and his partner Holly, also welcomed Vera into their whānau.
- **Miss Jasmine Primmer**, married Jaedyn Black and so from 2025 will be Mrs Black.
- **Miss Maia Murray** will be leaving us as our part-time guidance counsellor (heading to HNHS for full-time employment).
- Teacher aide **Amelia Hunt** left at the end of Term 2 to enter the teaching profession at Tamatea Intermediate and we wish her all the best.
- We welcome **Julie Mae Saliring**, a qualified teacher from the Philippines as a teacher aide.

2025 Start of year dates

Monday 27 January: Office Opens

Monday 27 - Wednesday 29 January: Course Interviews for all Year 11-13 Students and Whānau (information will be sent via post in the second week of January about booking online).

Friday 31 January: Teacher Only Day

February 1 February: Year 13 Leadership Camp (invited students)

Monday 3 February: First Day for Year 9, 12 and 13

Tuesday 4 February: Year 9, 10 and 11 attend school

Wednesday 5 February: All Year 9-13 students at school

Thursday 6 February: Waitangi Day - School Closed

Friday 7 February: Teacher Only Day (NB: Term 1 Ends

Friday 11 April: Term One Ends (Easter is in the holidays)



TIRA ORA 1990

In this issue of Karamū Kōrero we showcase Karamū's **twenty eighth year, the Year 1990.**

Principal:	Mr M J Lewis
Acting Deputy Principal:	Mrs J B Clark (Term 1)
Deputy Principal:	Mr A J Vester (Term 2->)
Acting Senior Mistress:	Mrs L Haddock (Term 1)
Assistant Principal:	Mrs J B Clark (Term 2 ->)
Karamu High School Board of Trustees (first year of BoT):	Mrs J Mills
Head Boy:	Caen Gosley
Head Girl:	Tira Johnson
Dux:	Bridget Stairmand
Proxime Accessit:	Carole Wright
General Excellence:	Carole Wright
Te Taonga Trophy for Maoritanga:	Rachel Edwards
Sportsman of the Year:	Byron Roff
Sportswoman of the Year:	Nina Westphal



School, Buildings & Grounds:

- Ministry still controls capital spending on renovations & new building projects
- Arson fire sees old prefab burnt down
- A kiln shed has been built & kiln added
- New Laboratories in D Block completed

Students:

- Number of Senior students returning each year was increasing
- Changes in Senior Structure – More courses of a Non-Academic nature ie: Pottery, painting, Legal Studies, Parenting, Outdoor Ed
- Karamu – Careers Department purchase a car for Driving instructor teaching driving & preparing students to get license; Bob Alexander instructor appointed
- Transition students go to Polytechnic, take part in Work Experience, and studying non academic subjects by correspondence
- Jason Kyle has success at National Science Fair which sees him a guest exhibitor at San Diego Science & Engineering Fair
- Several Camps ie: Seventh Form Beach Camp at Aramoana Beach; 4th Form Outdoor Ed at Ocean Beach; 6th Form to Outdoor Pursuit
- Work Day raises \$8,000 for lunchtime sports equipment; camera, music stands, garden improvements, portable barbecue; money toward plans for new canteen plans

Cultural:

- Karamu has success in cultural groups including: 5 school bands; winners of Junior Dance section in Regional Dance festival; Senior team win Regional Gymnastics Festival
- Bi-cultural Festival held with other schools invited includes debaters, musicians, actors, cultural groups

Sports:

- Sports Committee formed to focus on promoting sporting activities within the Junior School
- Ex Head girl Meka Whaitiri selected to NZ Netball team
- First XV Rugby strongest for last decade
- Gymnastics Club reintroduced and Surfing Club formed

HASTINGS

- Major flooding in Hawke's Bay – Wettest July for 83 years -overtaxing drainage and stormwater systems
- Central Heretaunga St water feature completed
- Car Park in Russell St complete

NZ

- NZ population: 3,343,600, General Election, NZ Government: National, NZ Prime Minister: Jim Bolger, 150 years since the signing of the Treaty of Waitangi, Sky TV begins, 1 and 2 cent coins removed from circulation, Commonwealth Games in Auckland

IF YOU HAVE CONCERNS

If you are a student and you have a concern

If your concern is about	You should first see	If not resolved, then	And is still not resolved
Your learning , eg. classwork and assessment	Your teacher	Your dean	Ms Gunn, Deputy Principal Curriculum
A discipline problem , eg. a detention	The teacher who gave you the detention	Your dean	Mr England Deputy Principal Student Management
A pastoral issue , eg. bullying, attendance	Your form teacher	Your dean	Mr England or Mr Rolls/Ms Murray the Guidance Counsellors

If you are a parent and you have a concern

If your concern is about	You should first see	If not resolved, then	And is still not resolved
A learning problem , eg. classwork and assessment	The dean	Ms Gunn Deputy Principal Curriculum & Assessment	Mrs Thomas Principal
A discipline problem , eg. a detention	The dean	Mr England Deputy Principal Student Management	
A pastoral issue , eg. bullying, attendance	The dean	Mr England or Mr Rolls/ Ms Murray the Guidance Counsellors	
A financial issue relating to any account or charge	Either Mrs Gray or Ms Brown in the office	Mrs Meiring Principal's EA	

YEAR LEVEL DEANS 2024

At Karamū High School, our year level deans play an important role in the pastoral care of your child. Our year level deans for 2024 are listed below for your information. Please email your child's dean or phone 878 7139 and leave a message, if you wish to contact them.

Year 9 Deans



Tash Crawford
tcrawford@karamu.school.nz

Year 10 Deans



Sam Overweel
soverweel@karamu.school.nz

Year 11 Deans



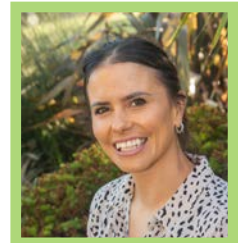
Julie Burn
jburn@karamu.school.nz

Year 12 Deans



Amber Walter
awalter@karamu.school.nz

Year 13 Deans



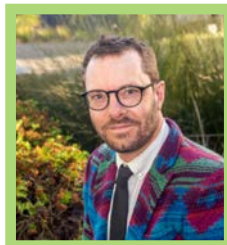
Jasmine Primmer
jprimmer@karamu.school.nz



Mike Fleming
mfleming@karamu.school.nz



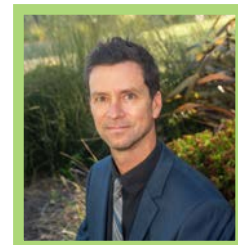
Byron Crawford
bcrawford@karamu.school.nz



Tom Willis
twillis@karamu.school.nz



Dave Murdoch
dmurdoch@karamu.school.nz



Justin Kite
jkite@karamu.school.nz

NGĀ POU KAIĀRAHI

Year 9



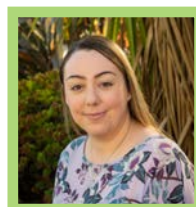
Seidah Tuaoi
stuaoi@karamu.school.nz

Year 10



Ashley Blake
ablake@karamu.school.nz

Year 11



Rebecca Love
rllove@karamu.school.nz

Year 12/13



Tom Blake
tblake@karamu.school.nz