



Uniform Shop Hours

Wednesdays
1:15–2:00pm
3:00– 4:00pm

Dates to Remember

Thursday 6 April

Last Day Term One
HB Unity Free Dress
Day

Monday 24 April

Teacher Only Day - No
school

Tuesday 25 April

ANZAC Day - No school

Wednesday 26 April Term Two Starts

6:00pm - ANZAC Music
Concert Hall

Friday 28 April

Community Garden
Planting -
Green Team

Thursday 4 May - Saturday 6 May

Freaky Friday School
Production

*Tickets available from
the school office*

Friday 5 May

HB Regional Kapa Haka

Windsor Avenue
Hastings 4122
New Zealand
Postal address
PO Box 346, Hastings 4156
Phone +64 6 878 7139
admin@karamu.school.nz
www.karamu.school.nz

RELAY FOR LIFE

On Friday 25 March our students collectively walked more than the length of New Zealand in our version of the Relay for Life. The event was organised by the Year 13 community leaders, with huge support from a strong group of Year 13s, in lieu of the annual Hawke's Bay event, which was cancelled due to Cyclone Gabrielle.

Community leaders Grace Sayer, Cole Potts-Tyro and Abel Barrett said the day was everything they had hoped for, and more, with students, teachers, whānau, and the wider community coming together with the aim at raising much-needed funds for, and awareness of cancer.

The day began at 7am and ended at 7pm, with a remembrance lap in the morning and a moment of silence at the end. Setting up a 400m lap on the school field, each class throughout the day completed a lap together, before passing the baton onto the next class. Combined with a free dress day, sausage sizzle and Mr Whippy, a real carnival feel was apparent. And not only did the students get into the occasion, the staff also held a bake sale in the staffroom and a multi-draw raffle contributing over \$500 to the total tally.

In total, we walked more than 2,00km - more than the 1,600km length of NZ. In total over \$2,000 was raised, all of which will be donated to the Cancer Society Hawke's Bay. #ProudlyKaramu #ProudlyHastings



PROUDLY
KARAMU

PROUDLY
HASTINGS

PROUDLY
LEARNING

PRINCIPAL

This term we have once again been called upon to be 'agile', 'flexible' and 'adaptable'. Words that had become so common in Covid times.

The scale of the damage and devastation that Cyclone Gabrielle has left in its wake was hard to comprehend. I was in awe of the immediate work done by our emergency services and volunteers, and then more recently by our roading and maintenance crews. The impact that this event has had on so many families across the district will be felt physically and mentally for a long period to come.

While we physically restored our school site to normality as quickly as possible, we know many of our students (and you as their support mechanisms) will feel the effects of this for some time. As I have said to the school we must now focus on manaakitanga - being kind, caring, welcoming and engaging. To yourself, and each other. I know our students know who to reach out to if they need assistance, they will show respect, generosity, and care for others by upholding our school value of manaakitanga and therefore make yourselves, your whānau and our school proud.

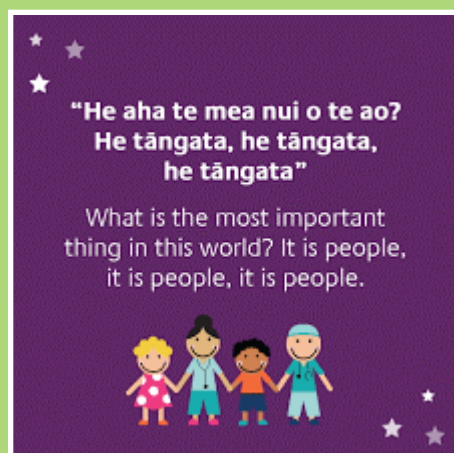
If you as a whānau need assistance we can provide it. We have our pastoral network of year level deans and the deputy principals, as well as our support team of the counsellor and the nurse (who can also tap into external agencies). We have also been supported by Kidscan with food and uniform. If you need assistance, or even just to let us be aware your family may need some extra awahi, please reach out. We have got through unprecedented times before by working together and I ask you to do that again.

While we have been mindful of not returning to 'business as usual' too quickly, I was so proud of our students at both athletics and the Relay for Life events. These events show our school colours (no pun intended!) where young people are engaged, having fun and participating with purpose. I look forward to the events in the first couple of weeks we have in Term 2 with a similar theme – especially the school show Freaky Friday and our kapa haka ropū competing in the regional championships.

In this issue we also share with pride our 2022 NCEA results and our 2023 Year 13 student leaders. Both of these come about through habit. A habit is formed through regular patterns of behaviour. In these two cases we are talking learning and leading. I have been speaking with the students recently about what they can control. They can control their behaviours and therefore what become habits. Those with good habits in their learning will be happy with their NCEA results. Those that struggle to form habits, can seek support from school in setting their goals for 2023.

I wish the school whānau a special break over Easter, the holiday period and then ANZAC Day. Both of these holidays hold special significance, but what is always important is that we take time to spend them with the people we care about.

Ngā mihi nui
Mrs Dionne Thomas
Tumuaki/Principal



FOOD AT SCHOOL

“Take care of your body. It’s the only place you have to live.”

Jim Rohn

Isn't that true? It's not the four walls, but your body is where you live. So, keep it clean, keep it healthy. Choose foods that are good for you. That is why we pride ourselves on being a water and milk only school. No fizzy drinks or energy drinks are sold on site or to be brought to school. Our canteen sells a selection of healthy food options as well as a selection of treat foods.

We also offer a Breakfast Club every Monday, Tuesday, Thursday and Friday morning 8-8.30am on the tables outside the canteen. This is provided by the school for anyone that has early morning training, arrives at school early or just wants to pick up fruit, cereal or toast. It is hosted by a teacher or a teacher aide so if students have homework they have support to finish that too.

We have a small selection of lunch packs available for students that need lunch as well. Students can approach the office for this support.

Because of our drive for healthy food options and the logistics in managing over 900 students at lunchtime, we ask students not to have food delivered or dropped to school by commercial outlets (ie: pizza delivery, UBEReats etc). If parents need to drop food off they should do so to the office and we will get a message sent to your child indicating it is available to pick up.

POLICY REVIEW

In 2023, all schools will review the **Legislation and Administration** section and the **Curriculum and Student Achievement** section (including EOTC and Learning).

All reviews are open to board, staff, students, and the school community (parents/caregivers/whānau).

To start reviewing:



1. Visit the website <https://karamu.schooldocs.co.nz/1893.htm>
2. Enter the username (karamu) and password (knowledge).
3. Follow the link to the relevant policy as listed.
4. Read the policy.
5. Click the **Start your review** button at the top right-hand corner of the page.
6. Select the reviewer type.
7. Enter your name (optional).
8. Follow the prompts to show that you've read the topic and enter your feedback if you'd like to comment.
9. Agree to the privacy statement and click "Submit review".

DEPUTY PRINCIPAL - CURRICULUM



Kia Ora Whānau,

Our school website is a valuable source of information for students and whānau. It is the place where students and whānau can access the Kamar portal to track academic progress. Also on the website in the Academic section are a series of useful documents including: NCEA for parents and students, appeals process and forms, NCEA external examination timetable, extension forms.

Students who for very legitimate reasons cannot meet deadlines (bereavement, illness or injury) should complete the extension form with evidence of their work and take it/email it to their teacher to apply for an extension.

We have been advised by NZQA that “COVID-related Learning Recognition Credits” will not be available to ākonga in 2023. Learning Recognition Credits were first used in 2020. Schools and kura were closed for significant periods during 2020 and 2021, and with ongoing effects of ākonga and teacher sickness into 2022, both regional and national approaches for the credits were available. For 2023, it is anticipated schools and kura will be able to address the ongoing impacts of Covid19 through the flexibility built into NCEA and Karamu’s usual processes for managing disruption.

Our academic leaders and the Year 13 Academic Institute members will start running “Period 6” (formerly known as Homework Club) each Thursday after school from 3pm – 4pm and Tuesday lunchtimes both held in the library. This is for any students who want help or just need a quiet place to work with WIFI.

Alongside continued support from teachers and home we believe every student can achieve their personal best if they invest in themselves first.

Ms Sarah Gunn, Deputy Principal - Curriculum

DEPUTY PRINCIPAL



Kia ora Karamu whānau,

A theme running through the articles in this newsletter will be around our disruption this term and I would agree. The one constant will be your child’s timetables and this sets up a routine to their day and week and allows them to plan and to have a good idea of what is to come for the week. All students will be issued a new timetable at the start of term with any changes to classrooms and for the Year 9 a transition to their next set of elective courses for the next 10 weeks. Following this students will need to keep a track of their timetable. They can either look it up through the KAMAR portal (parents can also do this and see attendance and other important information), take a photo and store that as a screen saver on their phone and our senior students can also access this through their mymahi login.

I have had the pleasure, along with Ms Walter to support the Senior C Girls Volleyball Team, and while we did not always get the results we were chasing they improved their skills and communication throughout the season and made the most of their time. As we move towards the winter season I would encourage all students to take part get involved and make the most of their opportunities available at Karamu High School. It is an opportunity for a fresh start, to try something new and to give it your best, you never know if you do not put yourself out there.

Mr Damien Hollands - Deputy Principal - Staff

DEPUTY PRINCIPAL

Kia Ora Whānau,



As we approach the end of the first term, many students will be turning their focus to completing assessments and making sure they are on track to achieve their academic goals. With the added pressure and stress of completing assessments, it is important to remember to look after your well-being. Some options you can take to help alleviate stress and help your overall wellbeing:

- Get involved with some form of physical activity
- Be available for family and friends
- Manage your time by creating a daily schedule
- Take some time out for you.

Regular school attendance has a strong correlation with student success. Regular attendance is defined as a student attending school 90% of the time. Attendance at school is important for many reasons:

- Helps learning.
- Supports mental wellbeing.
- Strengthens cultural capabilities.
- Supports gaining of qualifications.
- Fosters opportunities for social interactions.

If your child intends to be absent or you need assistance with their attendance, please contact the school.

From the beginning of Term 2, bluetooth speakers will be banned from school. Voice captured from both staff and students suggested that the lyrics played from speakers were often inappropriate and this caused offence and disruption to many. If a student is caught with a bluetooth speaker playing, this will be confiscated and handed to the office for them to collect at the end of the day. If caught a second time, the speaker will be handed to an SLT member, and a parent must collect. If your child has a bluetooth speaker, please encourage them to keep this at home.

Finally, as the weather starts to get cooler, please ensure that your child's jersey and jacket are clearly named. If misplaced, this will enable us to return the item to them immediately.

If you have concerns or questions about your child's welfare, please do not hesitate to contact their dean or myself.

Mr Troy England, Deputy Principal - Student Management

A promotional graphic for Karamu High School. It features a collage of photos of students and staff. In the center, the text reads "Did you go to Karamu High School?". To the right is a large stylized tree logo. At the bottom, there are three banners: a pink one saying "There's something you should know...", a blue one with the website "www.karamu.school.nz", and a green one with the motto "TIRA ORA".

Did you go to
Karamu High School?

There's something you should know...
register on our website

www.karamu.school.nz

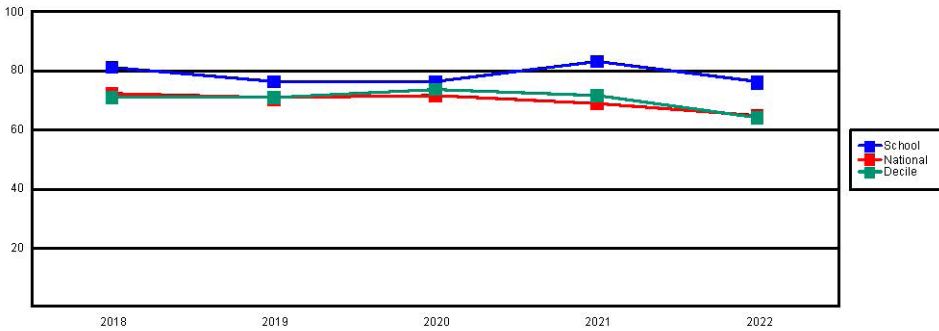
TIRA ORA

2022 NCEA RESULTS

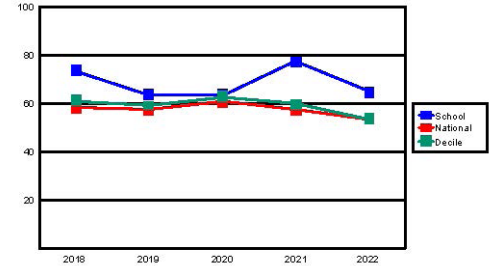
We are pleased to share our NCEA results from last year. Across all levels it is gratifying to see we are punching above both national results and our decile range. (NB: Karamu High School was a Decile 4 school on the national decile rating, which is a measure of the socio-economic position of a school's student community relative to other schools throughout the country), even though you can see the effects of Covid sees our achievement is down from our 2022 results (like both national and decile).

Our achievement rates of our Māori students have also tracked in a similar manner (down from 2022), but we were exceptionally proud of our Level 2 NCEA results (83.9% of Māori students achieved, compared to 82.7% of all students). Our Level 1 Māori achievement rate of 65.1% is also better than the national rate for all students of 64%. Māori student achievement will continue to be a focus for 2023. Following the introduction of initiatives such as the year level Kaiārahi, Puhoro STEM, and new initiatives around attendance and communication with home, we hope to continue to see achievement for all rise in 2023.

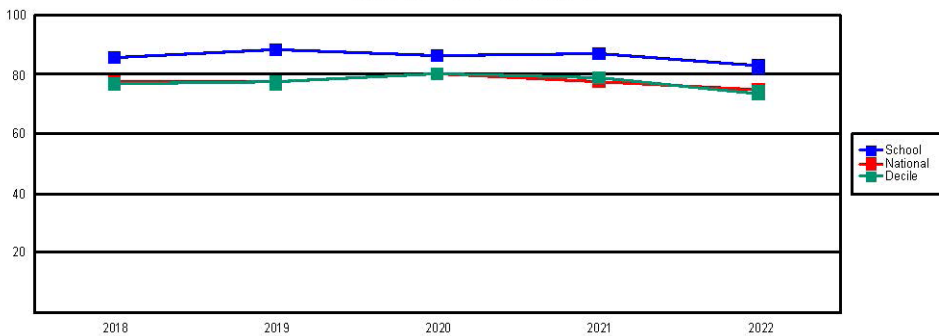
Year 11 - NCEA Level 1



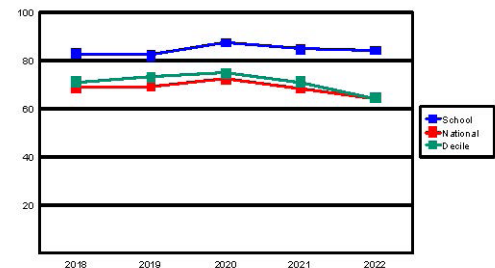
Year 11 NCEA Level 1 - Māori



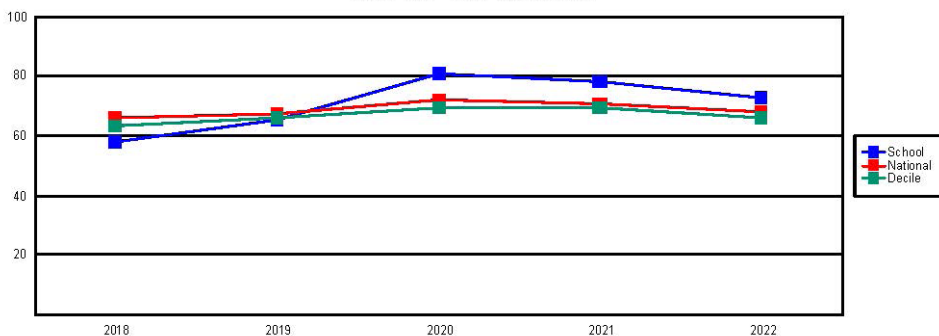
Year 12 - NCEA Level 2



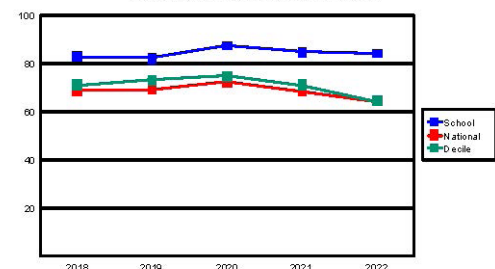
Year 12 NCEA Level 2 - Māori



Year 13 - NCEA Level 3



Year 12 NCEA Level 2 - Māori



Attendance and Engagement Strategy

In 2022 the government launched an Attendance and Engagement Strategy to ensure more pupils attend and engage in schools. The strategy was called All in for Learning, Kia kotahi te u ki te ako, created to help ākonga “go to school more regularly, participate and make progress.”



The campaign *Every School Day is a Big Day* was launched

with TV adverts, social media posts and print material around the motu. This was after school attendance had gradually decreased across New Zealand schools since 2015, even more so since Covid, with only around 3 in 5 children attending school regularly (regularly is defined at 90% attendance) and only 5% of New Zealanders also believing attendance is critical.

By 2026, the Ministry wants to increase the number of children attending regularly (over 90% of the term, or on average more than nine days a fortnight) to 75%.

Attendance at school is important for many reasons:

- Helps learning
- Supports the gaining of qualifications
- Develops mental well-being
- Strengthens cultural capabilities
- Fosters opportunities for social interactions
- Extends possibilities for the future

In 2023 we have been extremely lucky to be provided with additional funding by the Ministry of Education through a Regional Response Fund to increase the attendance and engagement of students. Selected staff will be working closely with a target group of students (70 - 80% attendance) to help re-engage and increase motivation to attend school. These students and their whānau have been contacted and we look forward to working collaboratively to help them improve their attendance.

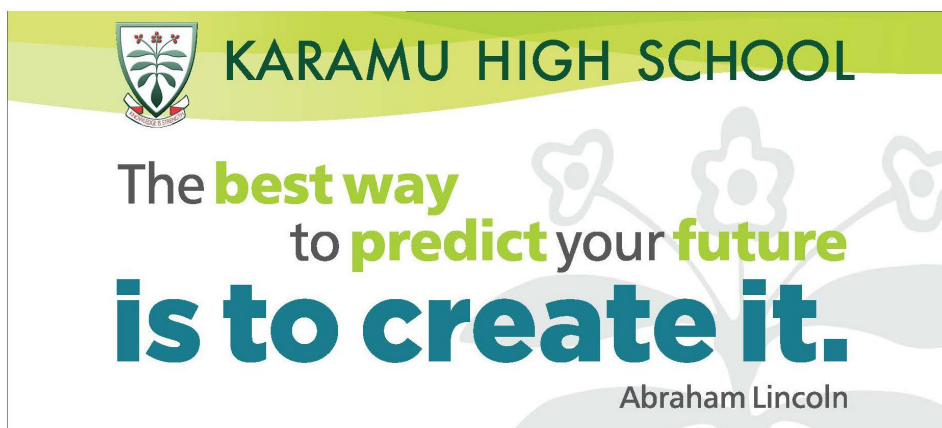
However, all whānau can help us get all students to school every day by:

- Knowing school starts promptly at 8.35am EVERY DAY (except Wednesday 9am)
- Not condoning unnecessary absences
- Providing a note or making a phone call if your child is late or absent for a legitimate reason
- Enquire into their school and learning lives, praising them for great attendance

YEAR 13 STUDENT LEADERS



Head Students: Lena Ormsby, Luke Wilson, **Deputy Head Students:** John Ybanez, Esta Chaplin



Academic Leaders: Emma Renall, Nicholas Evans, Caitlin Allan

YEAR 13 STUDENT LEADERS



Community Leaders: Cole Potts Tyro, Grace Sayer, Abel Barrett



Cultural Leaders: Kaiya Anderson-Maui, Calais Byrne



Performing Arts Leaders: Tyler Heesterman, Amy-Rose Costello



Sports Leaders: Hannah Hibbert, Innika Hapuku-Lambert



House Leaders: Tukituki: Bella Casson, Charlotte Orr, Kaweka: Olivia Thomas, Jayden Cornelissen, Heretaunga: Pashence Schneider-Aranui, Cameron Trass Te Mata: Taryn Derbidge, Robbie Sayer

FROM OUR SPORTS LEADERS

Sport at Karamu is well and truly active. From the very start of this year students have been signing up, trialling, attending meetings and playing. Keeping active with sport has been a huge focus of the lives of our students over the last couple of years and the latest statistics from New Zealand Sport show that we are way above the norm. Disruptions have not been like previous years, however school, home life responsibilities, peer pressures, other social interactions and even after school work still play a major part with non-participation by some with all the sports we have on offer. We would like to take this opportunity to give out a huge mihi to all our coaches and managers thus far, firstly for volunteering your time, commitment and enthusiasm. To all the parents - ngā mihi for your continued support, we know your time is limited with all the increased parental demands and expectations. Again, thank you to those who manage to find the time to help out. We always look forward to seeing and hearing you all cheering from the sidelines.

To date our participation numbers are as follows:

Athletics (11) Canoe Polo (22) Chess (37) Football (75) Hockey (47) Netball (90) Rugby (45) Softball (13) Volleyball (58) Water Polo (7).

In closing, well done to all the students participating in their chosen passion. Keep up the great mahi, we are very proud of you all. Also keep an eye out for the sports coming up; basketball, badminton and equestrian.

Innika Hapuku-Lambert and Hannah Hibbert
(Karamu Sports Leaders 2023)

9GDA TRIP TO RANUI FARM

As part of our whanaungatanga here at Karamu 9GDA headed out to Ranui Farm for the day. We had so much fun participating in paintball, golf, axe throwing, archery, kayaking and the super fast waterslide. As you can see a fantastic day had by all. A big thanks to Russ and the team at Ranui Farm. Ka mau te wehi.



EAST COAST NORTH ISLAND ATHLETICS CHAMPS

Karamu took a small development squad of athletes to the East Coast North Island Secondary School Athletics Championships earlier this term with a look to develop some potential athletes for the future.



The team participated well both on and off the field with several athletes stepping up and showing leadership qualities with helping the younger athletes, as well as organising the team to get to their events.

Top performer was Gerald Sauolevao as a first year in the intermediate age group. He gained a convincing fourth place in the shot put, and has next year in the same age group to better this placing, which we are confident he will.

Thank you to Miss Carlson, Mr Fleming and Mr Parker for supporting the team and doing officials duties.

Mr Fleming will be calling for interest in joining the Karamu Athletics Squad in Term 3 this year for next season. The squad will be attending Hastings club nights for exposure to competition and coaching.



KARAMU HIGH SCHOOL

You don't have to be
great to **start**,
but you **have** to
start to be **great**

TIRA ORA

In this issue of Karamu Kōrero we showcase Karamu's seventeenth year, the Year 1979.

1979

Principal:	Mr R McGarvey
First Assistant:	Mr A B Fordyce
Senior Mistress:	Miss S Henderson
Senior Master:	Mr A Grey
Hastings High School Board of Governors:	Mr M D Brown
School Roll:	954
Head Boy:	Graeme Fox
Head Girl:	Wendy Taylor
Dux:	Robert Shilston
Proxime Accessit:	James Griffin
General Excellence:	Wendy Taylor; Jinny Willis; Graeme Fox



Mr Wooster with the 1979 Boys Senior Tennis Team

School, Buildings & Grounds:

- Roll still dropping so Open Evening held to entice Form 3 students
- About 80 students attend Karamu from Flaxmere district.
- Three old Prefabs were dismantled (by demolition for PTA funds)
- Purchase of first mini-bus allowing small group travel
- Karamu High School now forms own Board of Governors (HGHS & HBHS still have combined board)

Staff:

- Rapidly reviving Music Department with new HOD Music (Mrs M Earle)
- Senior Mistress – Miss S Henderson on Sick Leave
- Mrs Esme MacDonald resigns to Bay of Islands (1965 – 1979)
- Mr W Wooster begins at Karamu

Students:

- Spring Week activities at lunchtime, include 7th Form Slave Auction, Cushion concert, staff vs 7th Form competitions, picnic & mufti
- 'Lens', the student newspaper is published for the second year
- HB Herald Tribune "Mr Editor – Karamu is having too many mufti days"
- 22 Adult students – sitting School Certificate or University Entrance
- School Work Day held to raise money for first school minibus. Each pupil is expected to earn \$7.00 and total raised \$6,500
- 7th Form 24 hour sportathon raises \$800 for International Year of the Child
- Work Experience Unit make knee rugs & invalid scissors from plywood for Eversley Home

Cultural & Clubs

- School Production: "Robyn" with leads Natalie Stevens & John Harkness
- Johnathan Krebs selected for National Youth Band
- Daniel Kerr selected as the Hawke's Bay Electorates Rep for Youth Parliament

Sport:

- Athletics Sports held for the first time at Nelson Park all-weather track with 9 new records and includes Form competition.
- Basketball on the increase – 3 boys & 2 girls teams
- Sports exchange between Karamu and Wairoa College

HASTINGS

- Morrisons produced their first BMX bike
- Tomoana Freezing works experience a major fire: \$5 million of produce lost & \$10 million damage to buildings
- Closure of Tenison College

NEW ZEALAND

- NZ Population: 3,141,300, NZ Prime Minister: Robert Muldoon
- Mt Erebus Disaster

WORLD EVENTS

- USA President: Jimmy Carter, UK Prime Minister: Margaret Thatcher
- China introduces One (1) Child Policy
- First Space Station
- Eradication of Smallpox



Mr Beaumont with the 1979 Girls Volleyball Team

KARAMU HIGH SCHOOL'S

Production of

Disney

FREAKY FRIDAY

©Disney

THE MUSICAL

Based on the novel *Freaky Friday* by
Mary Rodgers

\$20 adult \$10 child tickets from the school office

Karamu High School June Clark Centre

7pm Thursday 4th May

7pm Friday 5th May

2pm Saturday 6th May

HAWKE'S BAY PREMIERE

*Licensed exclusively by Music Theatre International (Australia).
All performance materials supplied by Hal Leonard Australia*

ATHLETIC SPORTS RESULTS

Year 9 Boys

Position	Name	Points	House
First	Conor Redshaw	201	Te Mata
Second	Seb D'Ath	141	Heretaunga
Third	Javarn Ray	126	Heretaunga

Year 9 Girls

Position	Name	Points	House
First	Ngaio van Hooijdonk	242	Heretaunga
Second	Sophie Walmsley	235	Te Mata
Third	Te Aroha Mohi	172	Tukituki

Year 10 Boys

Position	Name	Points	House
First	Caleb Shannon-Harris	331	Tuki Tuki
Second	Zane Tardieu	256	Heretaunga
Third	Joseph Bassett	238	Tukituki

Year 10 Girls

Position	Name	Points	House
First	Blaque Nohokau	260	Te Mata
Second	Charlotte Bewley	258	Kaweka
Third	Te Maire Smith-Dunlop	192	Kaweka

Senior Boys

Position	Name	Points	House
First	Alron Rajal	381	Tukituki
Second	Josh Purcell-Rogers	366	Heretaunga
Third	Teague Gibson	315	Kaweka

Senior Girls

Position	Name	Points	House
First	Ashlee Bird	266	Heretaunga
Second	Hannah Hibbert	238	Kaweka
Third	Isabelle Dillon	221	Tukituki

House Results

Position	House	Points
First	Heretaunga	4055
Second	Tukituki	4040
Third	Kaweka	3995
Fourth	Te Mata	3840



IF YOU HAVE CONCERNS

If you are a student and you have a concern

If your concern is about	You should first see	If not resolved, then	And is still not resolved
Your learning , eg. classwork and assessment	Your teacher	Your dean	Ms Gunn, Deputy Principal Curriculum
A discipline problem , eg. a detention	The teacher who gave you the detention	Your dean	Mr England Deputy Principal Student Management
A pastoral issue , eg. bullying, attendance	Your form teacher	Your dean	Mr England or Mr Rolls the Guidance Counsellor

If you are a parent and you have a concern

If your concern is about	You should first see	If not resolved, then	And is still not resolved
A learning problem , eg. classwork and assessment	The dean	Ms Gunn Deputy Principal Curriculum & Assessment	Mrs Thomas Principal
A discipline problem , eg. a detention	The dean	Mr England Deputy Principal Student Management	
A pastoral issue , eg. bullying, attendance	The dean	Mr England or Mr Rolls the Guidance Counsellor	
A financial issue relating to any account or charge	Either Mrs Gray or Ms Radley in the office	Mrs Hantler Principal's PA	

YEAR LEVEL DEANS 2023

At Karamu High School, our year level deans play an important role in the pastoral care of your child. Our year level deans for 2023 are listed below for your information. Please email your child's dean or phone 878 7139 and leave a message, if you wish to contact them.

Year 9 Deans



Tash Crawford
tcrawford@karamu.school.nz

Year 10 Deans



Rebecca Love
rlove@karamu.school.nz

Year 11 Deans



Amber Walter
awalter@karamu.school.nz

Year 12 Deans



Tracy Taylor
ttaylor@karamu.school.nz

Year 13 Deans



Kirsty Christian
kchristian@karamu.school.nz



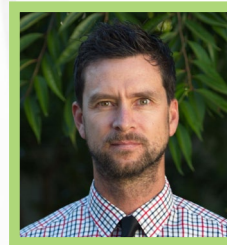
Mike Fleming
mfleming@karamu.school.nz



Byron Crawford
bcrawford@karamu.school.nz



Dave Murdoch
dmurdoch@karamu.school.nz



Justin Kite
jkite@karamu.school.nz



Karen Beaumont
karenbeaumont@karamu.school.nz

NGĀ POU KAIĀRAHI

Year 9



Seidah Tuaoi
stuaoi@karamu.school.nz

Year 10



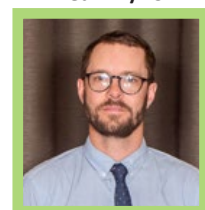
Ashley Blake
ablake@karamu.school.nz

Year 11



Tom Blake
tblake@karamu.school.nz

Year 12/13



Tom Willis
twillis@karamu.school.nz