



Uniform Shop Hours

Wednesdays

1:15–2:00pm

3:00–4:00pm

Dates to Remember

10, 11, 15, 16

November

Junior Exams

Friday 19 November

Leavers Assembly

22 November -

14 December

NCEA Examinations

Tuesday 23 November

Teacher Only Day

Monday 13 December

Senior Prizegiving

Wednesday 15 December

Junior Prizegiving

Windsor Avenue
Hastings 4122
New Zealand
Postal address
PO Box 346, Hastings 4156
Phone +64 6 878 7139
admin@karamu.school.nz
www.karamu.school.nz

GUMBOOT DAY

Gumboots of all sizes, colours and shapes donned the feet of our students on Friday 5 November in a bid to raise much-needed funds for the I AM HOPE foundation.

The second iteration of Gumboot Friday held this year proved to be a success at the school with a free dress day, gold-coin donation and sausage sizzle and bake sale held.

Founded by mental health advocate Mike King, the charity provides free counselling for young people in Aotearoa aged 25 and under.

It was not the first time the school has rallied together to raise funds, as well as awareness for children living with mental health issues. In May, the school combined the initiative with Pink Shirt Day, with proceeds going to the Mental Health Foundation. Both days were organised by the student council.

“Especially with Auckland being out of action, I think it’s important the regions support the rest of the country in raising money for charities like Gumboot Friday while we have the opportunity to do so.” *Keelan Heesterman.*



Staff and students got into the spirit of Gumboot Friday

PROUDLY
KARAMU

PROUDLY
HASTINGS

PROUDLY
LEARNING

PRINCIPAL

Tama tu tama ora, tama noho tama mate

An active person will remain healthy while a lazy one will become sick

What does being active look like?

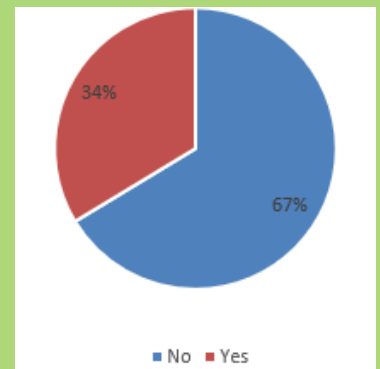
Recently the student council conducted a survey with the school around activity at lunchtime or break after noticing students sitting around not actively involving themselves in any of the activities available ie: handball, volleyball, free touch etc. They were also concerned with students sitting down, heads emersed in their devices ie: phones or laptops.

In their survey of the student body they inquired into what play/active recreation activities they would like to see available at lunchtime. From a play perspective students were keen to see similar 'giant' games like our chess set and so Jenga, Connect Four and Noughts and Crosses have been purchased. On the couple of sunny days we have had these have been very popular.

Do you do any physical activities at lunchtime or break?

For active recreation students were keen to see another volleyball net, badminton and rounders available. We will also be painting several sets of 'four square' around the school as handball is very popular.

We were exceptionally lucky to be supported by the Sport Hawke's Bay Tu Manawa fund to source the equipment and have teacher aides supervise and organise the activities.



As the seniors approach external examinations I urge them to also think about their activity levels. Exercise is a fantastic part of a self-care routine that has a positive effect on our ability to function effectively when trying to learn, revise, study or sit an examination.

As whanau I also encourage you to help here too. Because the adolescent brain sometimes finds it hard to know what is a suitable amount of sleep, food or exercise – how about encouraging or helping?

Healthy snacks, limited screen time, curfews and 'lights out' are useful parental mechanisms of support when students are trying to focus on being the best they can be at this time of the year. For the next four to five weeks do not be afraid control what you can for your child to achieve the best they can. I believe they will thank you in the end.

Ngā mihi maioha

Dionne Thomas
Principal



Keelan Heesterman takes on Hannah Hunt in Connect Four

POLICY REVIEW

We are currently reviewing the policy “Māori Educational Success” and we would appreciate your feedback. Please follow these instructions to give feedback:

1. Visit the website <https://karamu.schooldocs.co.nz/1893.htm>
2. Enter the username (karamu) and password (knowledge).
3. Follow the link to the relevant policy as listed.
4. Read the policy.
5. Click the Policy Review button at the top right-hand corner of the page.
6. Select the reviewer type "Parent".
7. Enter your name (optional).
8. Submit your ratings and comments.

This is available until the end of the term and we value your feedback.



Did you go to
Karamu High School?

There's something you should know...
register on our website

www.karamu.school.nz

TIRA ORA



This is a collection of Y13 Art Portfolios due to be submitted in their final week of school

DEPUTY PRINCIPAL - CURRICULUM



With NCEA starting on 22 November it is pleasing to see and hear students having taken advantage of further assessment opportunities and studying to prepare for external examinations.

Study leave starts at 3:00pm on Friday 19 November for Year 11, 12 and 13. However, for those Year 11 students enrolled in courses with external examinations, tutorials run by their teachers will be operating from Monday 22 November to Friday 26 November.

These sessions will be timetabled and be an hour in length. We encourage students to attend as it is targeted, active revision in a supported and structured environment. Students will receive a timetable of when these tutorials are scheduled.

All Year 11, 12 and 13 sitting external examinations have been given a personalised admission slip for entry into their examinations. It is important that students know when their examinations are as this is the only time these examinations can be sat. It is an expectation of the school that students will prepare well for their examinations and sit all papers entered. There are several useful forms of revision we encourage, but using past examination papers for revision is wise and these can be accessed at <http://www.nzqa.govt.nz/qualifications-standards/qualifications/ncea/subjects/>

When students are not at school it is not a time to hang out with mates or take on extra hours of part-time work. Future pathways and courses for next year are dependent on these final results. If a student cannot sit an examination for medical or tragic personal reasons (ie: bereavement), it is important to contact me immediately to initiate the Derived Grade process and there are specific forms that must be completed.

Year 9 and 10 are in the process of completing examinations in English, Mathematics, Science and Social Studies; then PAT tests will be completed in Comprehension, Punctuation and Grammar, Mathematics and Thinking in Science. This is so we can measure progress in each of these from the beginning of the year. Students are encouraged to give their best.

As outlined in previous communications, At Alert Level 2, Senior Prizegiving on Monday 13 December and Junior Prizegiving on Wednesday 15 December will be attended by student prize winners and staff only. We are working through both ceremonies being livestreamed so that our community can join in the celebrations.

Sarah Gunn
Deputy Principal - Curriculum



This is a collection of Y13 Art Portfolios due to be submitted in their final week of school

DEPUTY PRINCIPAL



Kia ora Whanau

All our students have now had the opportunity to select courses for the 2022 academic year. The Year 9 students have had the past five weeks in their current option courses and have in the past week been submitting their courses for 2022. It is important that students discuss their selection with their parents and at any stage, you can contact me via email or your child can come and see me to discuss and make any changes.

From next week students in the junior school will be issued a new Junior High timetable.

This new timetable includes moving the option subjects to the start of the day for the juniors, grouping classes in their physical education slots and giving more flexibility to the use of the school and resources with the seniors off-site on study leave.

It is important that students attend for the remainder of the year and incentives will be announced next week to keep students engaged. It also allows for the opportunity for students to step up into leadership positions for the remainder of the year.

From the start of 2022, we will no longer have class sets of laptops. It has come to a time where these resources are not fit for the day to day use in the classroom and the focus will be for students at all levels to bring their own laptops. If you need advice around bringing a device to school please do contact me and we can show you the different options that you may wish to pursue. Students having their own laptop has become part of the norm, especially at high school and we look forward to your child bringing theirs in 2022.

Damien Hollands
Deputy Principal

DEPUTY PRINCIPAL - STUDENT MANAGEMENT



It has been a busy few weeks for our senior students as they gear up for externals and study leave. They have had to be incredibly resilient with our current climate and Covid-19 limitations.

I wish those leaving all the best for the future whatever it may bring. The one thing I will say is the world is still round, and we have battled adversity before.

Junior High will start on Monday 22 November. We will announce 16 junior leaders, four from each house who will have responsibilities to meet in the last three weeks of school.

Congratulations to the students who will be selected for this role, it is a good start to school leadership positions.

I am looking forward to junior high school, as this helps to keep the junior students focused until the end of the academic year.

A reminder that the front of the school is a very busy place at the end of each school day and that parents are not to use the main carpark to pick up students unless they have a medical situation. There are limited parking spots and we are trying to make exiting the school as safe as possible. Thank you for your courtesy around the crossing area at the front of the school.

Also as we move into warmer weather can you please make sure your child's jersey is named.

Wayne Wooster
Deputy Principal

TIRA ORA

‘Tira Ora’ is the name given to the branchlet of the Karamu tree, so an ideal name for branchlets or students of Karamu. Here we share the journey of one of our Tira Ora

Byron Roff (attended 1987-1991)

Byron is currently business manager for the central region of The Building Intelligence Group. The Building Intelligence Group is over 30 years strong in independent project management and project advisory. Byron recently opened their 9th office in Napier and together with his team are leading the redevelopment of Napier Civic Precinct, including the new library, and the redevelopment of Flaxmere College. He is loving being back in the bay as a professional.

Heading this team, Byron is a firm believer that project success is all about getting the right people on the project, building strong project teams and cultures within the project. “I’ve always been inspired by strong, calm, leaders and pioneers who have the courage and determination to back themselves whatever the situation, such as Sir Ed Hillary, Fran Wilde (ex Wellington Mayor) and Richard Branson, to name a few”. Not surprisingly Byron was a strong team player and leader in his time at Karamu.

In his 7th form he was not only head boy but also captain of the 1st XV rugby, 1st XI cricket, trapshooting and volleyball teams, as well as senior boys athletics and cross country champions. Not surprisingly he was awarded Sportsman of the Year – a cup now aptly named the Roff Cup.

Upon leaving school Byron continued with his sporting prowess, while studying at Victoria University in Wellington he played representative rugby, and played AFL for New Zealand.

He is a highly regarded public sector and engagement specialist with very strong local government pedigree across infrastructure projects, waterfront development projects, education, public space and social housing redevelopments. In 2010 he was awarded the NZ Project Management Institute Manager of the Year for his work leading the \$400million social housing regeneration project for Wellington City. Few are as astute at managing public consultation and stakeholder relationships. Some of his most recent work includes project managing the refurbishment of the Katherine Mansfield House and Garden, the Waitohi Johnsonville Library and the Canterbury Earthquake Memorial.



He describes one of his proudest accomplishments as having the honour and privilege to lead the design and construction of the Canterbury Earthquake National Memorial. Working closely with the victims’ families and those seriously injured to deliver a special place that memorialised their loved one and this tragic event in our nation’s history was incredibly challenging and humbling.

When not working Byron is a keen family man, with three sons, and after growing up in the awesome Hawke’s Bay, he has always maintained a close connection to the ocean. Living on the waters edge in Wellington he gets to go diving and surfing outside his gateway with his sons, which he describes as a privilege.

As part of his commitment to youth Byron also mentors through the Keystone Trust Scholarship, a programme for students looking to get into the property and construction profession. He says he loves seeing Karamu students and alumni in business, his industry or visiting our capital. We should all be very proud of our Hastings whakapapa and is constantly amazed at the success our Karamu whanau achieve. #ProudlyKaramu.



TIRA ORA

In this issue of Karamu Korero we showcase Karamu's sixth year, the Year 1968

1968

Principal:
First Assistant:

Mr N Wilde
Mr A B Fordyce

Senior Mistress:
Hastings High School Board of Governors:
School Roll:

Miss G K I Harris
Mr M R Shakespeare
850+

Head Boy:
Head Girl:
Dux:
Proxime Accessit:

Stephen Bee
Robyn Fox
Ian West
Vivien Kiddle

General Excellence:

Rhondda Burn & Graeme Telford

School Buildings & Grounds:

- New double unit library block is planned

Staff:

- Mr Geoff Fuller (Head Of Art) wins a United Nations stamp design contest

Students:

- Karamu High School Magazine is produced in a new format (A4 size) and new name "Tira Ora". Seen as greater opportunity for student creativity
- 21 Prefects
- First Science Fair held in Hawke's Bay, Karamu High School is well represented in entries & prizes
- Pupils hold a fundraising paper drive
- Karamu has its first overseas exchange students:
- Jan van Asch – wins Scholarship to attend College in USA
- Geoffrey Anderson – Rotary Twin Exchange to Sydney
- Rod Newton – Rotary Twin Exchange student from Sydney
- Tom Escandel – American Rotary International Exchange student attends Karamu Sports:
- Karamu Old Girls' Basketball Club and Hockey Teams formed

Cultural/Clubs:

- School Production is "Down in the Valley" with leads Mark Hensman and Ann Skipworth
- New groups formed: Folk Club; Crusaders; Chess
- Groups that ceased: Golf & Softball
- Maori Group have piupiu and pare bodices created

HASTINGS

- Dawnmeat build business in Omahu Rd
- Wattie Industry merged with General Foods Co
- Flaxmere out of the red by \$80,000
- New look Blossom Festival
- Windsor Park is developed with the Council developing Noddy Town, Fantasyland & Tomorrow land

THE HEDGEHOG.

Myriads of prickles,
A field full of thistles,
Creeping along on his own.
No-one touches him,
His spikes being so sharp,
His speed is so slow.
He rolls up so quickly,
When someone approaches.



- D. Johnstone, 4P2.

Robynne Welch 4P1

LEARNING HAPPENINGS

Young Enterprise Scheme Success

Emily Morgan and LJ Henderson-Ereatara (Ngāti Kahungunu, Ngāti Porou) both Year 13 Business Studies students, were runners-up in the East Coast Young Enterprise Scheme (YES) regional finals with their Woolly Bones business.

They produced wool eco-friendly pet toys for dogs and cats, giving back to local farmers. They were scented with lavender or catnip using locally sourced wool from Hawke's Bay farms.

They promised their product would "keep your furry friends distracted for hours, while benefitting the environment and our local community" – surely factors which influenced the judging panel and saw them walk away as the second highest scoring business across the Hawke's Bay/Tairāwhiti region.

Huge congratulations LJ and Emily.

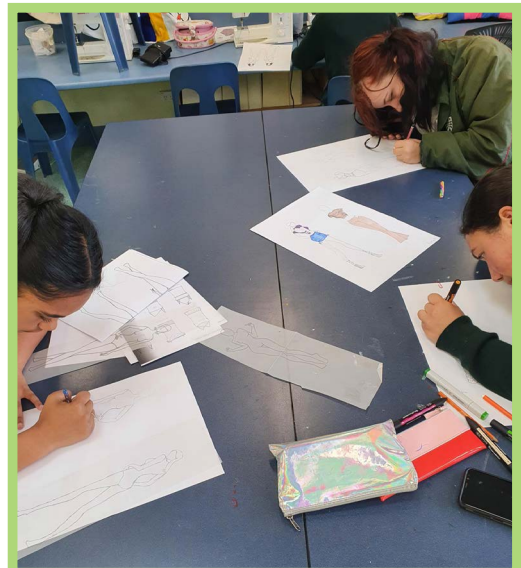


This is a collection of Y13 Art Portfolios due to be submitted in their final week of school

Fashion and Textile Design

Fashion and the Year 10 Fashion and Textile Design students have been enjoying learning fashion drawing recently.

Some students have discovered they have a real talent in this area, particularly Arlene Crisostomo, whose drawings are pictured.



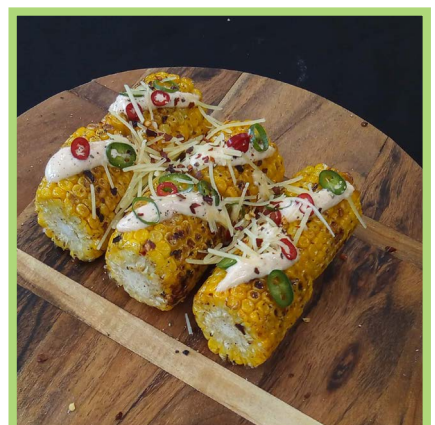
LEARNING HAPPENINGS

Hospitality

This term students in Year 11 and Year 12 Hospitality have been working on a range of Unit Standards.

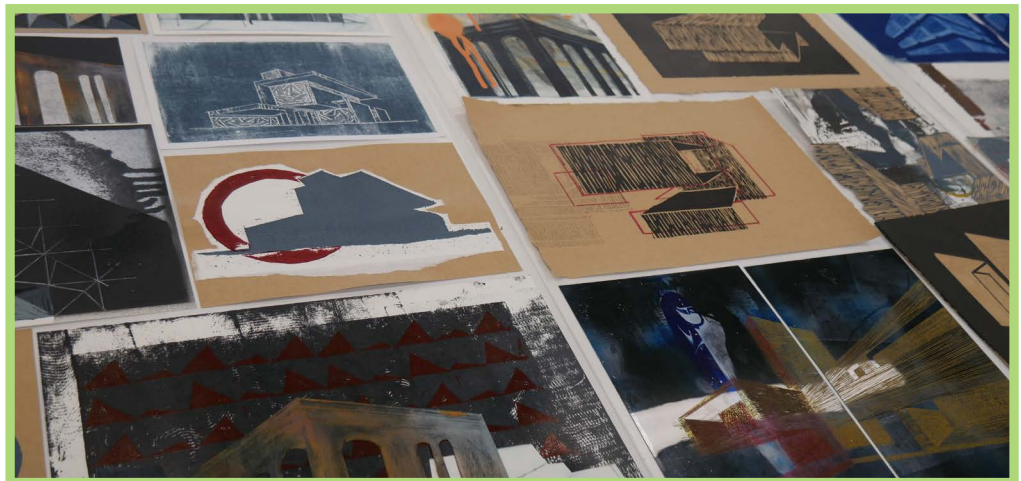
Year 11 have been perfecting roasting and hot finger foods, and Year 12 have been exploring international cuisines. Each student needs to prepare and present their own dish for their assessment task. This involves a lot of planning, practice, and skills in presentation.

The students have come a long way this year and they have presented a range of amazing dishes. He tino pai tō mahi!



LEARNING HAPPENINGS

This is a collection of Y13 Art Portfolios due to be submitted in their final week of school



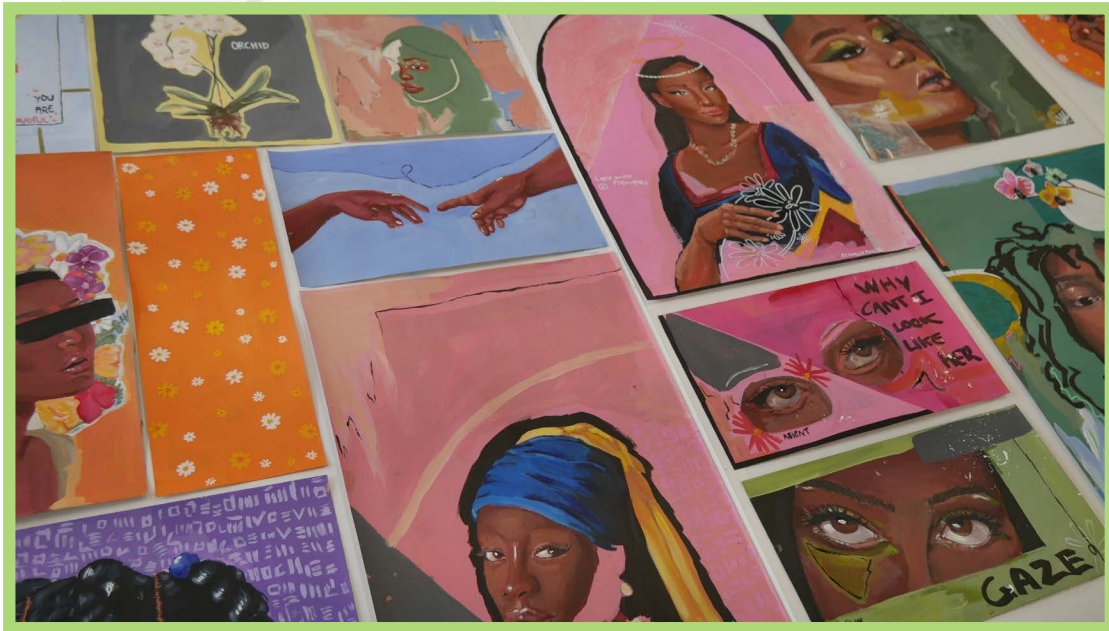
SCHOOL HAPPENINGS

Karamu Junior High

As our seniors leave for external examinations on Friday 19 November we move into an exciting time with Karamu Junior High starting.

Juniors have the campus to embrace and we take the opportunity to change the timetable to accommodate more option time and several house activities.

Year 10 student leaders are chosen and we support several opportunities for these students to lead student initiatives. One will be supporting Women's Refuge for the annual Christmas appeal. More information will come in the coming weeks.



This is a collection of Y13 Art Portfolios due to be submitted in their final week of school

Prizegivings

Senior and junior prizegivings are very special events on the Karamu High School calendar and often attended by many whanau members. Whilst we remain at Alert Level 2, we will not be able to invite parents/caregivers and whanau members to these events. The rules for gatherings and physical distancing protocols mean that this would not be feasible and therefore unsafe for our school community.

At Alert Level 2 Senior Prizegiving on Monday 13 December and Junior Prizegiving on Wednesday 15 December will be attended by student prize winners and staff only.

We are working through both prizegivings being livestreamed so that other students, parents/caregivers and extended whanau members can join in the celebrations, albeit in a virtual format.

We will communicate with our community how these events can be viewed so you can still celebrate the achievements of our school community. Thank you once again for your understanding and support with respect to these difficult decisions we have had to make to adhere to the challenges of Covid.

IF YOU HAVE CONCERNS

If you are a student and you have a concern

If your concern is about	You should first see	If not resolved, then	And is still not resolved
Your learning , eg. classwork and assessment	Your teacher	Your dean	Ms Gunn, Deputy Principal Curriculum
A discipline problem , eg. a detention	The teacher who gave you the detention	Your dean	Mr Wooster Deputy Principal Student Management
A pastoral issue , eg. bullying, attendance	Your form teacher	Your dean	Mr Wooster or Mr Rolls the Guidance Counsellor

If you are a parent and you have a concern

If your concern is about	You should first see	If not resolved, then	And is still not resolved
A learning problem , eg. classwork and assessment	The dean	Ms Gunn, Deputy Principal Curriculum & Assessment	Mrs Thomas Principal
A discipline problem , eg. a detention	The dean	Mr Wooster Deputy Principal Student Management	
A pastoral issue , eg. bullying, attendance	The dean	Mr Wooster or Mr Rolls the Guidance Counsellor	
A financial issue relating to any account or charge	Either Mrs Gray or Ms Radley in the office	Mrs Hantler Principal's PA	

YEAR LEVEL DEANS 2021

At Karamu High School, our year level deans play an important role in the pastoral care of your child. Our year level deans for 2021 are listed below for your information. Please email your child's dean or phone 878 7139 and leave a message, if you wish to contact them.

Year 9 Deans



Tash Crawford
tcrawford@karamu.school.nz

Year 10 Deans



Rebecca Love
rlove@karamu.school.nz

Year 11 Deans



Kirsty Christian
kchristian@karamu.school.nz

Year 12 Deans



Ange Dudman
adudman@karamu.school.nz
Acting Dean for Term 4

Year 13 Deans



Jasmine Primmer
jprimer@karamu.school.nz



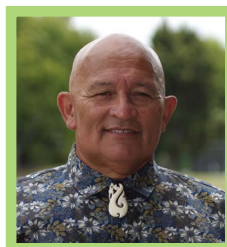
Kane Nepe Apatu
knepeapatu@karamu.school.nz



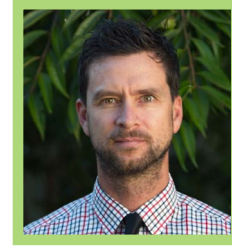
Byron Crawford
bcrawford@karamu.school.nz



Colin Rafferty
crafferty@karamu.school.nz



Tom Blake
tblade@karamu.school.nz



Justin Kite
jkite@karamu.school.nz

MAORI MENTORS

Year 9



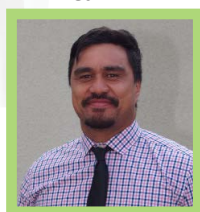
Seidah Tuaoi
stuaioi@karamu.school.nz

Year 10



Ashley Blake
ablake@karamu.school.nz

Year 11



Elijah Martin
emartin@karamu.school.nz

Year 12



Karen Beaumont
karenbeaumont@karamu.school.nz